

LEA Name : Elizabeth Forward SD
Address : 401 Rock Run Road
Elizabeth , PA 15037

County : Allegheny
AUN Number : 103023153
LEA Type : SD

Annual Financial Report Accuracy Certification Statement

For Fiscal Year Ending

6/30/2023

Pennsylvania Department of Education

&

Office of Comptroller Operations

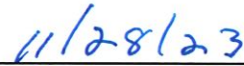
PDE-2056: Intermediate Unit

PDE-2057: School District, AVTS/CTC, Charter School,
and Special Program Jointure

CERTIFICATION: By signing this page I agree that the electronic data submitted is a complete and accurate statement of the financial operations and status of the local education agency for the fiscal year. It has been prepared in accordance with generally accepted accounting principles and established Commonwealth of PA reporting guidelines.




Chief School Administrator Signature



Date



Board Secretary Signature



Date

Albert J Ragan

Contact Person

aragan@efsd.net

Contact Person E-mail Address

(412)896-2308

Ext :

Contact Person Telephone Number

Contact Person Fax Number

Audit Certification
Annual Financial Report:
For Fiscal Year Ending **6/30/2023**
(Pursuant to PA School Code Section 218(b))

LEA Name : Elizabeth Forward SD
AUN Number : 103023153
County : Allegheny

Audit Certification Due: 12/31/2023


This certification is applicable to the Annual Financial Report data submitted through the Consolidated Financial Reporting System (CFRS).

CERTIFICATION: By signing this page I agree that the financial statements of the school have been properly audited as noted above pursuant to Article XXIV, and in the auditor's professional opinion, the Annual Financial Report (PDE-2057) submitted through CFRS is materially consistent with the audited financial statements.

Chief School Administrator




Signature

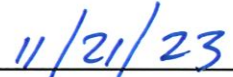


Date

Board Secretary



Signature



Date

Albert J Ragan

Contact Person

aragan@efsd.net

Contact Person E-mail Address

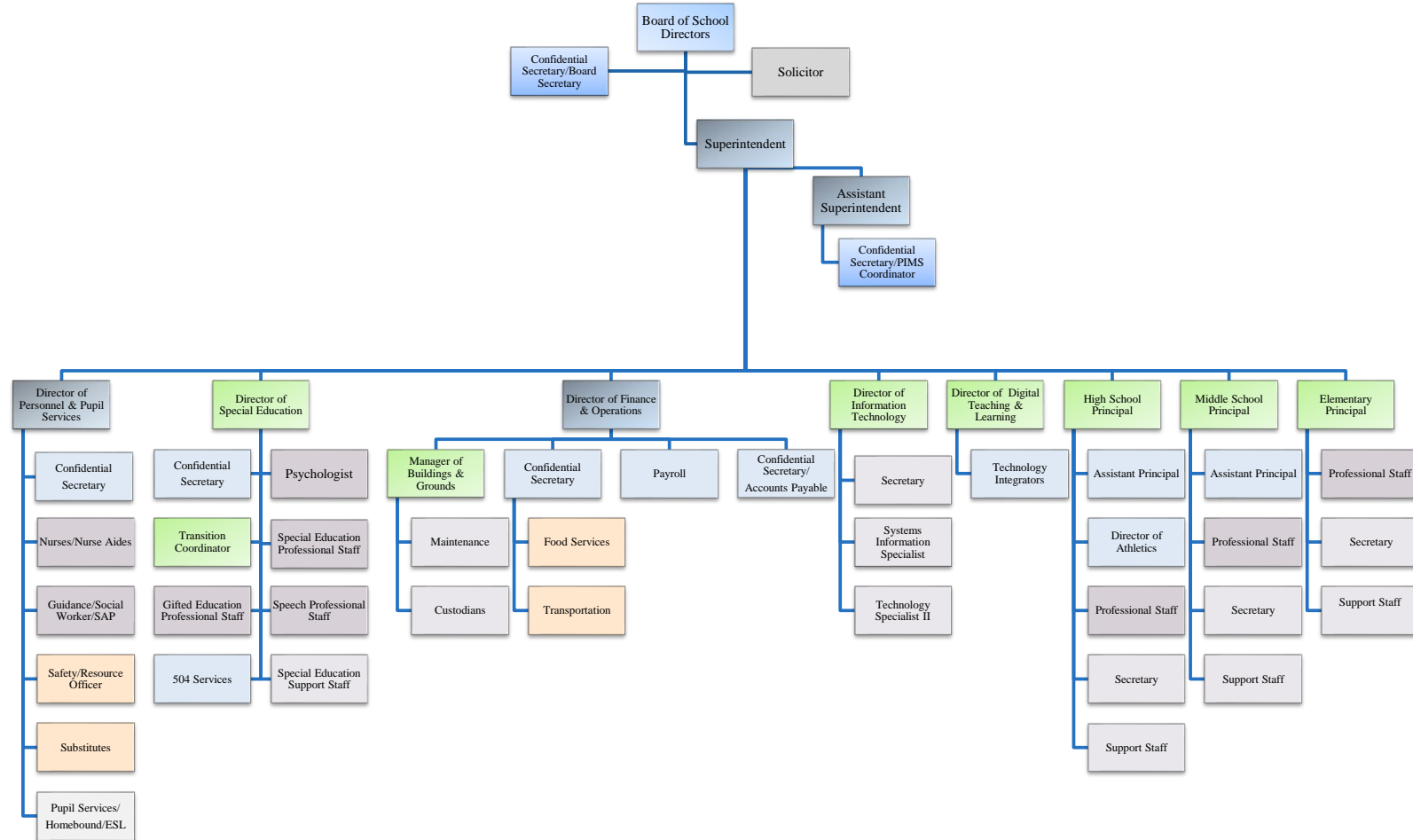
(412)896-2308

Ext :

Contact Person Telephone Number

Contact Person Fax Number

ADMINISTRATIVE ORGANIZATIONAL CHART 2022-2023



**ELIZABETH
FORWARD**

Book	Policy Manual
Section	600 Finances
Title	GASB Statement 34
Code	622
Status	Active
Adopted	October 28, 2009

Purpose

The Board recognizes the need to implement the required accounting and financial reporting standards stipulated by the Pennsylvania Department of Education. [\[1\]](#)

The primary objectives of implementing the GASB Statement 34 are to assure compliance with state requirements, and properly account for both the financial and economic resources of the district.

Authority

Participation of the school district in any such activity shall be in accordance with Board policy. [\[2\]](#)

Delegation of Responsibility

The responsibility to coordinate the compilation and preparation of all information necessary to implement this policy is delegated to the Business Manager.

The designated individual shall be responsible for implementing the necessary procedures to establish and maintain a fixed asset inventory, including depreciation schedules. Depreciation shall be computed on a straight-line basis over the useful lives of the assets, using an averaging convention. Normal maintenance and repairs shall be charged to expense as incurred; major renewals and betterments that materially extend the life or increase the value of the asset shall be capitalized. A schedule of accumulated depreciation shall be consistent from year to year. The basis for depreciation, including groups of assets and useful lives, shall be in writing and submitted for review to the Board.

The Business Manager shall prepare the required Management Discussion and Analysis (MD&A). The MD&A shall be in the form required by GASB Statement 34 and shall be submitted to the Board for approval, prior to publication.

Prior to submission of the MD&A for Board approval, the district's independent auditors shall review the MD&A, in accordance with SAS No. 52, "Required Supplementary Information".

Guidelines

In order to associate debt with acquired assets and to avoid net asset deficits, any asset that has been acquired with debt proceeds shall be capitalized, regardless of the cost of the asset. The asset life of these assets shall be considered relative to the time of the respective debt amortizations.

For all other assets not acquired by debt proceeds, the dollar value of any single item for inclusion in the fixed assets accounts shall be not less than \$4,000.

The capitalization threshold shall be set at a level that will capture at least eighty percent (80%) of all fixed assets.

The assets listed below do not normally individually meet capitalization threshold criteria:

1. Library books.
2. Classroom texts.
3. Computer equipment.
4. Classroom furniture.

These asset category costs shall be capitalized and depreciated as groups when that group's acquisition cost exceeds the capitalization threshold in any given fiscal year.

For group asset depreciation purposes, the estimated useful life of the group may be based on the weighted average or simple average of the useful life of individual items, or on an assessment of the life of the group as a whole. Periodically, the district shall review the estimated life of groups of assets and adjust the remaining depreciation life of the group.

Assets that fall below the capitalization threshold for GASB 34 reporting purposes may still be significant for insurance, warranty service, and obsolescence/ replacement policy tracking purposes. The district may record and maintain these non-GASB 34 asset inventories in subsidiary ledgers.

Legal

[1. 24 P.S. 613](#)

[2. 24 P.S. 218](#)

<u>Val Number</u>	<u>Description</u>	<u>Justification</u>
30118	Revenue Detail - Fund 40: A negative amount has been reported in account 6500 Earnings on Investments. Please correct or enter an explanation. REV Detail 6500, Fund 40: \$-19,119.99	This was a loss on money held in the Bond sinking fund per the Trustee reports.

LEA : 103023153 Elizabeth Forward SD

Printed 11/28/2023 11:27:43 AM

Amounts Expressed in Whole Dollars		<u>General Fund</u> <u>(10)</u>	<u>Student Sponsored</u> <u>Activity Fund</u> <u>(21)</u>	<u>Public Purpose Trust</u> <u>(27)</u>	<u>Other Compt Approved</u> <u>(28)</u>	<u>Athletic / Activity</u> <u>(29)</u>
Assets And Deferred Outflows Of Resources						
Assets						
0100	Cash and Cash Equivalents	8,932,207				
0110	Investments	9,699,739				
0120	Taxes Receivable	5,272,296				
0130	Due From Other Funds					
0141	Due From Other Governments	57,725				
0142	State Revenue Receivable	1,974,877				
0143	Federal Revenue Receivable	1,380,377				
0145	Other Intergovernmental Revenue Receivable					
0146	Due from Primary Government					
0147	Due from Component Unit					
0150	Other Receivables	27,824				
0170	Inventories					
0180	Prepaid Expenses (Expenditures)	417,425				
0190	Other Current Assets					
Total Assets		\$27,762,470				
0910	Deferred Outflows of Resources					
Total Assets And Deferred Outflows Of Resources		\$27,762,470				

Amounts Expressed in Whole Dollars		<u>Capital Reserve (690.</u> <u>1850)</u> <u>(31)</u>	<u>Capital Reserve (1431)</u> <u>(32)</u>	<u>Other Capital Projects</u> <u>Fund</u> <u>(39)</u>	<u>Debt Service</u> <u>(40)</u>	<u>Permanent</u> <u>(90)</u>
Assets And Deferred Outflows Of Resources						
Assets						
0100	Cash and Cash Equivalents		676,712			
0110	Investments		2,784,406		2,150,883	
0120	Taxes Receivable					
0130	Due From Other Funds					
0141	Due From Other Governments					
0142	State Revenue Receivable					
0143	Federal Revenue Receivable					
0145	Other Intergovernmental Revenue Receivable					
0146	Due from Primary Government					
0147	Due from Component Unit					
0150	Other Receivables					
0170	Inventories					
0180	Prepaid Expenses (Expenditures)					
0190	Other Current Assets					
Total Assets			\$3,461,118		\$2,150,883	
0910	Deferred Outflows of Resources					
Total Assets And Deferred Outflows Of Resources			\$3,461,118		\$2,150,883	

Amounts Expressed in Whole Dollars		<u>Total Governmental</u>
		<u>Funds</u>
Assets And Deferred Outflows Of Resources		
Assets		
0100 Cash and Cash Equivalents	9,608,919	
0110 Investments	14,635,028	
0120 Taxes Receivable	5,272,296	
0130 Due From Other Funds		
0141 Due From Other Governments	57,725	
0142 State Revenue Receivable	1,974,877	
0143 Federal Revenue Receivable	1,380,377	
0145 Other Intergovernmental Revenue Receivable		
0146 Due from Primary Government		
0147 Due from Component Unit		
0150 Other Receivables	27,824	
0170 Inventories		
0180 Prepaid Expenses (Expenditures)	417,425	
0190 Other Current Assets		
Total Assets	\$33,374,471	
0910 Deferred Outflows of Resources		
Total Assets And Deferred Outflows Of Resources	\$33,374,471	

Amounts Expressed in Whole Dollars	<u>General Fund</u> <u>(10)</u>	<u>Student Sponsored</u> <u>Activity Fund</u> <u>(21)</u>	<u>Public Purpose Trust</u> <u>(27)</u>	<u>Other Compt Approved</u> <u>(28)</u>	<u>Athletic / Activity</u> <u>(29)</u>
Liabilities And Deferred Inflows Of Resources And Fund Balances					
Liabilities					
0400 Due to Other Funds					
0411 Due to Other Governments					
0412 Due to Primary Government					
0413 Due to Component Unit					
0420 Accounts Payable	504,288				
0430 Contracts Payable					
0440 Current Portion of Long-Term Debt					
0450 Short-Term Payables					
0461 Accrued Salaries and Benefits	2,973,705				
0462 Payroll Deductions and Withholding	2,149,256				
0480 Unearned Revenues	12,469,245				
0490 Other Current Liabilities	18,787				
Total Liabilities	\$18,115,281				
0950 Deferred Inflows of Resources					
Fund Balances					
0810 Nonspendable Fund Balance	417,425				
0820 Restricted Fund Balance					
0830 Committed Fund Balance					
0840 Assigned Fund Balance	6,000,000				
0850 Unassigned Fund Balance	3,229,764				
Total Fund Balances	\$9,647,189				
Total Liabilities, Deferred Inflows Of Resources And Fund Balances	\$27,762,470				

LEA : 103023153 Elizabeth Forward SD

Printed 11/28/2023 11:27:43 AM

Amounts Expressed in Whole Dollars		<u>Capital Reserve (690.</u> <u>1850)</u> <u>(31)</u>	<u>Capital Reserve (1431)</u> <u>(32)</u>	<u>Other Capital Projects</u> <u>Fund</u> <u>(39)</u>	<u>Debt Service</u> <u>(40)</u>	<u>Permanent</u> <u>(90)</u>
Liabilities And Deferred Inflows Of Resources And Fund Balances						
Liabilities						
0400	Due to Other Funds					
0411	Due to Other Governments					
0412	Due to Primary Government					
0413	Due to Component Unit					
0420	Accounts Payable					
0430	Contracts Payable					
0440	Current Portion of Long-Term Debt					
0450	Short-Term Payables					
0461	Accrued Salaries and Benefits					
0462	Payroll Deductions and Withholding					
0480	Unearned Revenues					
0490	Other Current Liabilities					
Total Liabilities						
0950	Deferred Inflows of Resources					
Fund Balances						
0810	Nonspendable Fund Balance					
0820	Restricted Fund Balance		3,461,118		2,150,883	
0830	Committed Fund Balance					
0840	Assigned Fund Balance					
0850	Unassigned Fund Balance					
Total Fund Balances			\$3,461,118		\$2,150,883	
Total Liabilities, Deferred Inflows Of Resources And Fund Balances			\$3,461,118		\$2,150,883	

LEA : 103023153 Elizabeth Forward SD

Printed 11/28/2023 11:27:43 AM

Amounts Expressed in Whole Dollars		<u>Total Governmental Funds</u>
Liabilities And Deferred Inflows Of Resources And Fund Balances		
Liabilities		
0400 Due to Other Funds		
0411 Due to Other Governments		
0412 Due to Primary Government		
0413 Due to Component Unit		
0420 Accounts Payable	504,288	
0430 Contracts Payable		
0440 Current Portion of Long-Term Debt		
0450 Short-Term Payables		
0461 Accrued Salaries and Benefits	2,973,705	
0462 Payroll Deductions and Withholding	2,149,256	
0480 Unearned Revenues	12,469,245	
0490 Other Current Liabilities	18,787	
Total Liabilities	\$18,115,281	
0950 Deferred Inflows of Resources		
Fund Balances		
0810 Nonspendable Fund Balance	417,425	
0820 Restricted Fund Balance	5,612,001	
0830 Committed Fund Balance		
0840 Assigned Fund Balance	6,000,000	
0850 Unassigned Fund Balance	3,229,764	
Total Fund Balances	\$15,259,190	
Total Liabilities, Deferred Inflows Of Resources And Fund Balances	\$33,374,471	

Amounts Expressed in Whole Dollars	<u>General Fund</u> <u>(10)</u>	<u>Student Sponsored</u> <u>Activity Fund</u> <u>(21)</u>	<u>Public Purpose Trust</u> <u>(27)</u>	<u>Other Compt Approved</u> <u>(28)</u>	<u>Athletic / Activity</u> <u>(29)</u>
Revenues					
6000 Revenue from Local Sources	26,248,713				
7000 Revenue from State Sources	22,052,903				
8000 Revenue from Federal Sources	2,414,506				
Total Revenues	\$50,716,122				
Expenditures					
1000 Instruction	28,407,396				
2000 Support Services	15,622,677				
3000 Operation of Non-Instructional Services	1,489,819				
4000 Facilities Acquisition, Construction and Improvement Services	2,381,241				
5110 Debt Service					
5130 Refund of Prior Year Revenues / Receipts	59,473				
5140 Leases and Other Right-to-Use Arrangements					
Total Expenditures	\$47,960,606				
Excess (Deficiency) Of Revenues Over Expenditures	\$2,755,516				
Other Financing Sources (Uses)					
9110 Face Value of Bonds Issued					
9120 Proceeds from Refunding of Bonds					
9130 Bond Premiums					
9200 Proceeds from Extended Term Financing, Leases, and Other Right-to-Use Arrangements					
9300 Interfund Transfers - IN	2,829				
9400 Sale of or Compensation for Loss of Fixed Assets	9,190				
9710 Transfers from Component Units					
9720 Transfers from Primary Governments					
9910 Other Financing Sources Not Listed in the 9000 Series					
9990 Insurance Recoveries	2,190,943				
5120 Debt Service – Refunded Bonds					
5150 Bond Discounts					
5200 Interfund Transfers – Out	3,942,768				
5300 Transfers Out to Component Units/Primary Governments					
Total Other Financing Sources (Uses)	(\$1,739,806)				

Amounts Expressed in Whole Dollars		<u>Capital Reserve (690.1850)</u> <u>(31)</u>	<u>Capital Reserve (1431)</u> <u>(32)</u>	<u>Other Capital Projects</u> <u>Fund</u> <u>(39)</u>	<u>Debt Service</u> <u>(40)</u>	<u>Permanent</u> <u>(90)</u>
Revenues						
6000	Revenue from Local Sources		64,643		(19,120)	
7000	Revenue from State Sources					
8000	Revenue from Federal Sources					
Total Revenues			\$64,643		(\$19,120)	
Expenditures						
1000	Instruction					
2000	Support Services					
3000	Operation of Non-Instructional Services					
4000	Facilities Acquisition, Construction and Improvement Services		51,173			
5110	Debt Service				3,158,728	
5130	Refund of Prior Year Revenues / Receipts					
5140	Leases and Other Right-to-Use Arrangements					
Total Expenditures			\$51,173		\$3,158,728	
Excess (Deficiency) Of Revenues Over Expenditures			\$13,470		(\$3,177,848)	
Other Financing Sources (Uses)						
9110	Face Value of Bonds Issued					
9120	Proceeds from Refunding of Bonds					
9130	Bond Premiums					
9200	Proceeds from Extended Term Financing, Leases, and Other Right-to-Use Arrangements					
9300	Interfund Transfers - IN		784,040		3,158,728	
9400	Sale of or Compensation for Loss of Fixed Assets					
9710	Transfers from Component Units					
9720	Transfers from Primary Governments					
9910	Other Financing Sources Not Listed in the 9000 Series					
9990	Insurance Recoveries					
5120	Debt Service – Refunded Bonds					
5150	Bond Discounts					
5200	Interfund Transfers – Out					
5300	Transfers Out to Component Units/Primary Governments					
Total Other Financing Sources (Uses)			\$784,040		\$3,158,728	

Amounts Expressed in Whole Dollars		<u>Total Governmental Funds</u>
Revenues		
6000	Revenue from Local Sources	26,294,236
7000	Revenue from State Sources	22,052,903
8000	Revenue from Federal Sources	2,414,506
Total Revenues		\$50,761,645
Expenditures		
1000	Instruction	28,407,396
2000	Support Services	15,622,677
3000	Operation of Non-Instructional Services	1,489,819
4000	Facilities Acquisition, Construction and Improvement Services	2,432,414
5110	Debt Service	3,158,728
5130	Refund of Prior Year Revenues / Receipts	59,473
5140	Leases and Other Right-to-Use Arrangements	
Total Expenditures		\$51,170,507
Excess (Deficiency) Of Revenues Over Expenditures		(\$408,862)
Other Financing Sources (Uses)		
9110	Face Value of Bonds Issued	
9120	Proceeds from Refunding of Bonds	
9130	Bond Premiums	
9200	Proceeds from Extended Term Financing, Leases, and Other Right-to-Use Arrangements	
9300	Interfund Transfers - IN	3,945,597
9400	Sale of or Compensation for Loss of Fixed Assets	9,190
9710	Transfers from Component Units	
9720	Transfers from Primary Governments	
9910	Other Financing Sources Not Listed in the 9000 Series	
9990	Insurance Recoveries	2,190,943
5120	Debt Service – Refunded Bonds	
5150	Bond Discounts	
5200	Interfund Transfers – Out	3,942,768
5300	Transfers Out to Component Units/Primary Governments	
Total Other Financing Sources (Uses)		\$2,202,962

Amounts Expressed in Whole Dollars		<u>General Fund</u> <u>(10)</u>	<u>Student Sponsored</u> <u>Activity Fund</u> <u>(21)</u>	<u>Public Purpose Trust</u> <u>(27)</u>	<u>Other Compt Approved</u> <u>(28)</u>	<u>Athletic / Activity</u> <u>(29)</u>
Special And Extraordinary Items						
9920	Special Items – Gains					
9930	Extraordinary Items – Gains					
5520	Special Items – Losses					
5530	Extraordinary Items – Losses					
Net Change In Fund Balances		\$1,015,710				
Fund Balance						
0001	Fund Balance - Beginning of Fiscal Year	8,631,479				
Fund Balance - End Of Year		\$9,647,189				

Amounts Expressed in Whole Dollars		<u>Capital Reserve (690.</u> <u>1850)</u> <u>(31)</u>	<u>Capital Reserve (1431)</u> <u>(32)</u>	<u>Other Capital Projects</u> <u>Fund</u> <u>(39)</u>	<u>Debt Service</u> <u>(40)</u>	<u>Permanent</u> <u>(90)</u>
Special And Extraordinary Items						
9920	Special Items – Gains					
9930	Extraordinary Items – Gains					
5520	Special Items – Losses					
5530	Extraordinary Items – Losses					
Net Change In Fund Balances			\$797,510		(\$19,120)	
Fund Balance						
0001	Fund Balance - Beginning of Fiscal Year		2,663,608		2,170,004	
Fund Balance - End Of Year			\$3,461,118		\$2,150,884	

Amounts Expressed in Whole Dollars		<u>Total Governmental Funds</u>
Special And Extraordinary Items		
9920	Special Items – Gains	
9930	Extraordinary Items – Gains	
5520	Special Items – Losses	
5530	Extraordinary Items – Losses	
Net Change In Fund Balances		\$1,794,100
Fund Balance		
0001	Fund Balance - Beginning of Fiscal Year	13,465,091
Fund Balance - End Of Year		\$15,259,191

Amounts Expressed in Whole Dollars		<u>Food Service</u> <u>(51)</u>	<u>Child Care</u> <u>Operations</u> <u>(52)</u>	<u>Other Enterprise</u> <u>(58)</u>	<u>TOTAL</u>	<u>Internal Service</u> <u>(60)</u>
Assets And Deferred Outflows Of Resources						
Current Assets						
0100	Cash and Cash Equivalents	734,003			734,003	
0110	Investments					
0130	Due From Other Funds					
0141	Due From Other Governments					
0142	State Revenue Receivable					
0143	Federal Revenue Receivable					
0146	Due from Primary Government					
0147	Due from Component Unit					
0150	Other Receivables					
0170	Inventories	30,315			30,315	
0180	Prepaid Expenses (Expenditures)					
0190	Other Current Assets					
Total Current Assets		\$764,318			\$764,318	
Noncurrent Assets						
0211	Land					
0212	Site Improvements (Net)					
0220	Buildings and Building Improvements (Net)					
0230	Tangible Property and Intangible Right-To-Use Assets (Net)	64,310			64,310	
0250	Construction in Progress					
0260	Long Term Prepayments					
0290	Other Noncurrent Assets					
Total Noncurrent Assets		\$64,310			\$64,310	
0910	Deferred Outflows of Resources					
Total Assets And Deferred Outflows Of Resources		\$828,628			\$828,628	

Amounts Expressed in Whole Dollars	<u>Food Service</u> <u>(51)</u>	<u>Child Care</u> <u>Operations</u> <u>(52)</u>	<u>Other Enterprise</u> <u>(58)</u>	<u>TOTAL</u>	<u>Internal Service</u> <u>(60)</u>
Liabilities And Deferred Inflows Of Resources And Net Position					
Current Liabilities					
0400 Due to Other Funds					
0411 Due to Other Governments					
0413 Due to Component Unit					
0420 Accounts Payable	33,856			33,856	
0430 Contracts Payable					
0440 Current Portion of Long-Term Debt					
0450 Short-Term Payables					
0461 Accrued Salaries and Benefits					
0462 Payroll Deductions and Withholding					
0480 Unearned Revenues					
0490 Other Current Liabilities					
Total Current Liabilities	\$33,856			\$33,856	
Noncurrent Liabilities					
0510 Bonds Payable					
0520 Extended-Term Financing Agreements Payable					
0530 Lease and Other Right-To-Use Obligations					
0540 Accumulated Compensated Absences					
0550 Authority Lease Obligations					
0560 Other Post-Employment Benefits (OPEB)					
0570 Net Pension Liability					
0599 Other Noncurrent Liabilities					
Total Noncurrent Liabilities					
Total Liabilities	\$33,856			\$33,856	
0950 Deferred Inflows of Resources					
Net Position					
0791 Net Investment in Capital Assets	64,310			64,310	
0008 Restricted Net Position (0792 – 0798)					
0799 Unrestricted Net Position	730,462			730,462	
Total Net Position	\$794,772			\$794,772	
Total Liabilities And Deferred Inflows Of Resources And Net Position	\$828,628			\$828,628	

Amounts Expressed in Whole Dollars	<u>Food Service</u> <u>(51)</u>	<u>Child Care Operations</u> <u>(52)</u>	<u>Other Enterprise</u> <u>(58)</u>	<u>TOTAL</u>	<u>Internal Service</u> <u>(60)</u>
Operating Revenues					
6600 Food Service Revenue	365,695			365,695	
0071 Charges for Services					
0072 Other Operating Revenue					
Total Operating Revenues	\$365,695			\$365,695	
Operating Expenses					
100 Personnel Services – Salaries					
200 Personnel Services – Employee Benefits					
300 Purchased Professional and Technical Services					
400 Purchased Property Services					
500 Other Purchased Services	949,161			949,161	
600 Supplies	139,581			139,581	
740 Depreciation	12,868			12,868	
770 Amortization Expense					
810 Dues and Fees	999			999	
880 Refunds of Prior Years' Receipts					
890 Miscellaneous Expenditures					
Total Operating Expenses	\$1,102,609			\$1,102,609	
Operating Income (Loss)	(\$736,914)			(\$736,914)	
Non Operating Revenues (Expenses)					
6500 Earnings on Investments	12,690			12,690	
6830 Federal Revenue from Intermediary Sources					
6920 Contributions and Donations from Private Sources					
6930 Gains or Losses on Sale of Fixed Assets					
6991 Refunds of a Prior Year Expenditure					
7000 Revenue from State Sources	96,096			96,096	
8000 Revenue from Federal Sources	838,742			838,742	
9990 Insurance Recoveries					
820 Claims and Judgments Against the LEA					
830 Interest					
TOTAL Non Operating Revenues (Expenses)	\$947,528			\$947,528	
Income (Loss) Before Contributions And Transfers	\$210,614			\$210,614	

Amounts Expressed in Whole Dollars	<u>Food Service</u> <u>(51)</u>	<u>Child Care Operations</u> <u>(52)</u>	<u>Other Enterprise</u> <u>(58)</u>	<u>TOTAL</u>	<u>Internal Service</u> <u>(60)</u>
Contributions, Transfers, and Special and Extraordinary Items					
5200 Interfund Transfers – Out	2,829			2,829	
5300 Transfers Out to Component Units/Primary Governments					
5520 Special Items – Losses					
5530 Extraordinary Items – Losses					
9300 Interfund Transfers - IN					
9500 Capital Contributions					
9700 Transfers IN From Component Units/Primary Governments					
9920 Special Items – Gains					
9930 Extraordinary Items – Gains					
Change In Net Position	\$207,785			\$207,785	
0002 Net Position - Beginning of Fiscal Year	586,986			586,986	
0003 Accounting Changes / Residual Equity Transfers					
Net Position - End Of Year	\$794,771			\$794,771	

LEA : 103023153 Elizabeth Forward SD

Printed 11/28/2023 11:28:10 AM

Amounts Expressed in Whole Dollars	<u>Food Service</u> <u>(51)</u>	<u>Child Care Operations</u> <u>(52)</u>	<u>Other Enterprise</u> <u>(58)</u>	<u>TOTAL</u>	<u>Internal Service(60)</u>
Cash Flows From Operating Activities					
0011 Cash Receipts From Users	315,332			315,332	
0012 Cash Receipts From Assessments Made to Other Funds					
0013 Cash Receipts From Earnings on Investments					
0014 Cash Receipts From Other Operating Revenue					
0015 Cash Payments To Employees For Services					
0016 Cash Payments For Insurance Claims					
0017 Cash Payments To Suppliers For Goods and Services	1,131,366			1,131,366	
0018 Cash Payments For Other Operating Expenses					
Net Cash Provided By (Used For) Operating Activities	(\$816,034)			(\$816,034)	
Cash Flows From Non-Capital Financing Activities					
0021 Receipts From Local Sources - 6000					
0022 Receipts From State Sources - 7000	96,876			96,876	
0023 Receipts From Federal Sources -8000	793,541			793,541	
0024 Notes and Loans Received (Repaid)					
0025 Interest Paid on Notes/Loans - 5100-830					
0026 Operating Transfers In (Out)/Residual Equity Trans					
0027 Operating Transfers In (Out) Primary Government / Comp Unit	(2,829)			(2,829)	
0028 Receipts From Refund of Prior Year Expenditures - 6991					
0029 Special and Extraordinary Gains (losses)					
0030 Receipts from Insurance Recoveries -9990					
Net Cash Prov By (Used for) Non-Capital Financing Activities	\$887,588			\$887,588	
Cash Flows From Capital and Related Financing Activities					
0031 Payments For Fac Acq, Const, and Imp - 4000					
0032 Gain / (Loss) on Sale of Fixed Assets - 6930					
0033 Proceeds From Extended Term Financing - 9200					
0034 Principal Paid on Financing Agreements					
0035 Interest Paid on Financing Agreements - 5100-830					
0036 (Inc) Dec in Contributed Capital					
Net Cash Prov By (Used for) Capital and Related Financing Activities					
Cash Flows From Investing Activities					
0041 Earnings on Investments - 6500	12,691			12,691	
0042 Purchase of Inv Securities / Deposits to Inv Pools					
0043 Receipts From Investment Pool Withdrawals					
0044 Proceeds from Sale and Maturity of Inv Securities					

LEA : 103023153 Elizabeth Forward SD

Printed 11/28/2023 11:28:10 AM

0045 Loans Received (Paid)

Net Cash Prov By (Used for) Investing Activities	\$12,691	\$12,691
--	----------	----------

LEA : 103023153 Elizabeth Forward SD

Printed 11/28/2023 11:28:10 AM

	Food Service	Child Care Operations	Other Enterprise	TOTAL	Internal Service
	(51)	(52)	(58)		(60)
Net Increase (Decrease) in Cash Flows	84,245			84,245	
0004 Cash and Cash Equivalents Beginning of Year	649,758			649,758	
Cash and Cash Equivalents at Year End	\$734,003			\$734,003	
Reconciliation of Operating Income (Loss) To Net Cash Provided by (Used For) Operating Activities					
0005 Operating Income (Loss) per REP	(736,914)			(736,914)	
Adjustments					
0051 Depreciation and Net Amortization	12,868			12,868	
0052 Provision for Uncollectible Accounts					
0053 Other Adjustments					
Effect of Changes in Assets, Liabilities, Deferred Outflows and Deferred Inflows					
0054 (Inc) Dec In Accounts Receivable (0120-0150)					
0055 Advances to Other Funds					
0056 (Inc) Dec in Inventories (0170)	83			83	
0057 (Inc) Dec in Prepaid Expenses (0180)					
0058 (Inc) Dec in Other Current or Noncurrent Assets	70,660			70,660	
0064 Deferred Outflows (0910)					
0059 Inc (Dec) in Accounts Payable (0400-0450)	(112,368)			(112,368)	
0060 Inc (Dec) in Accrued Salaries/Benefits (0461)					
0065 Inc (Dec) in Net Pension Liabilities (0570)					
0066 Inc (Dec) in Other Postemp Benefit Oblig (0560)					
0061 Inc (Dec) in Payroll Deductions/Withholding (0462)					
0062 Inc (Dec) in Unearned Revenue (0480)	(50,363)			(50,363)	
0063 Inc (Dec) in Other Current or Noncurrent Liabilities					
0067 Deferred Inflows (0950)					
Total Adjustments	(\$79,120)			(\$79,120)	
Cash Provided By (Used for) Total	(\$816,034)			(\$816,034)	

COMBINED STATEMENT OF CASH FLOWS
SCHEDULE OF NONCASH INVESTING, CAPITAL, AND FINANCING ACTIVITIES

Explanation of Transaction and Balance Sheet Effect	Amount
Total	

LEA : 103023153 Elizabeth Forward SD

Printed 11/28/2023 11:28:11 AM

Amounts Expressed in Whole Dollars		<u>Private Purpose Trust</u> <u>(71)</u>	<u>Investment Trust</u> <u>(72)</u>	<u>Pension Trust</u> <u>(73)</u>	<u>Student Activity Custodial</u> <u>(81)</u>
Assets And Deferred Outflows Of Resources					
Assets					
0100	Cash and Cash Equivalents				195,243
0110	Investments				
0130	Due From Other Funds				
0140	Due from Other Governments, Primary Government and Component Units				
0150	Other Receivables				
0170	Inventories				
0180	Prepaid Expenses (Expenditures)				
0190	Other Current Assets				
0220	Buildings and Building Improvements (Net)				
0230	Tangible Property and Intangible Right-To-Use Assets (Net)				
Total Assets					\$195,243
0910	Deferred Outflows of Resources				
Total Assets And Deferred Outflows Of Resources					\$195,243

LEA : 103023153 Elizabeth Forward SD

Printed 11/28/2023 11:28:11 AM

Amounts Expressed in Whole Dollars		<u>Other Custodial</u> <u>(89)</u>	<u>Fiduciary Component Units</u> <u>(98)</u>	<u>Total Fiduciary Funds</u>
Assets And Deferred Outflows Of Resources				
Assets				
0100	Cash and Cash Equivalents			195,243
0110	Investments			
0130	Due From Other Funds			
0140	Due from Other Governments, Primary Government and Component Units			
0150	Other Receivables			
0170	Inventories			
0180	Prepaid Expenses (Expenditures)			
0190	Other Current Assets			
0220	Buildings and Building Improvements (Net)			
0230	Tangible Property and Intangible Right-To-Use Assets (Net)			
Total Assets				\$195,243
0910	Deferred Outflows of Resources			
Total Assets And Deferred Outflows Of Resources				\$195,243

LEA : 103023153 Elizabeth Forward SD

Printed 11/28/2023 11:28:11 AM

Amounts Expressed in Whole Dollars		<u>Private Purpose Trust</u>	<u>Investment Trust</u>	<u>Pension Trust</u>	<u>Student Activity Custodial</u>
		<u>(71)</u>	<u>(72)</u>	<u>(73)</u>	<u>(81)</u>
Liabilities, Deferred Inflows Of Resources And Net Position					
Liabilities					
0400	Due to Other Funds				
0410	Due to Other Governments, Primary Government and Component Units				
0420	Accounts Payable				
0430	Contracts Payable				
0450	Short-Term Payables				
0460	Payroll Accruals and Withholdings				
0480	Unearned Revenues				
0490	Other Current Liabilities				
Total Liabilities					
0950	Deferred Inflows of Resources				
Net Position					
0791	Net Investment in Capital Assets				
0009	Restricted Net Position (0792 – 0798)				
0799	Unrestricted Net Position				195,243
Total Net Position					
Total Liabilities, Deferred Inflows Of Resources And Net Position					

LEA : 103023153 Elizabeth Forward SD

Printed 11/28/2023 11:28:11 AM

Amounts Expressed in Whole Dollars		<u>Other Custodial</u> <u>(89)</u>	<u>Fiduciary Component Units</u> <u>(98)</u>	<u>Total Fiduciary Funds</u>
Liabilities, Deferred Inflows Of Resources And Net Position				
Liabilities				
0400	Due to Other Funds			
0410	Due to Other Governments, Primary Government and Component Units			
0420	Accounts Payable			
0430	Contracts Payable			
0450	Short-Term Payables			
0460	Payroll Accruals and Withholdings			
0480	Unearned Revenues			
0490	Other Current Liabilities			
Total Liabilities				
0950	Deferred Inflows of Resources			
Net Position				
0791	Net Investment in Capital Assets			
0009	Restricted Net Position (0792 – 0798)			
0799	Unrestricted Net Position			195,243
Total Net Position				\$195,243
Total Liabilities, Deferred Inflows Of Resources And Net Position				\$195,243

LEA : 103023153 Elizabeth Forward SD

Printed 11/28/2023 11:28:12 AM

Amounts Expressed in Whole Dollars	<u>Private Purpose Trust</u> <u>(71)</u>	<u>Investment Trust</u> <u>(72)</u>	<u>Pension Trust</u> <u>(73)</u>	<u>Student Activity</u> <u>Custodial</u> <u>(81)</u>	<u>Other Custodial</u> <u>(89)</u>	<u>Fiduciary Component</u> <u>Units</u> <u>(98)</u>
Additions						
0091 Gifts and Contributions						
0095 Net Investment Earnings						
0092 Other Additions				316,569		
Deductions						
0093 Scholarships Awarded						
0094 Other Deductions				235,512		
Change In Net Position				\$81,057		
0006 Net Position – Beginning of Fiscal Year				114,186		
0007 Net Position Held in Trust for Pension Benefits						
Net Position - End of Fiscal Year				\$195,243		

LEA : 103023153 Elizabeth Forward SD

Printed 11/28/2023 11:28:12 AM

Amounts Expressed in Whole Dollars		<u>Total Fiduciary</u> <u>Funds</u>
Additions		
0091	Gifts and Contributions	
0095	Net Investment Earnings	
0092	Other Additions	316,569
Deductions		
0093	Scholarships Awarded	
0094	Other Deductions	235,512
Change In Net Position		\$81,057
0006	Net Position – Beginning of Fiscal Year	114,186
0007	Net Position Held in Trust for Pension Benefits	
Net Position - End of Fiscal Year		\$195,243

	Revenue Reported In Current Year	Current Year Tax Accrual	Prior Year Tax Accrual	Taxes Collected In Current Year
Revenue from Local Sources				
6111 Current Real Estate Taxes	20,288,323.91			20,288,323.91
6113 Public Utility Realty Taxes	22,587.00			22,587.00
6143 Current Act 511 Local Services Taxes	25,018.30			25,018.30
6151 Current Act 511 Earned Income Taxes	2,580,361.03			2,580,361.03
6153 Current Act 511 Real Estate Transfer Taxes	202,705.73			202,705.73
6411 Delinquent Real Estate Taxes	1,118,516.49			1,118,516.49
6451 Delinquent Act 511 Earned Income Taxes	120,713.05			120,713.05
6500 Earnings on Investments	527,560.39			
6700 Revenues from LEA Activities	68,724.05			
6832 Federal IDEA Revenue Received as Pass Through	503,539.02			
6910 Rentals	412,843.92			
6920 Contributions and Donations from Private Sources	150,807.70			
6944 Receipts from Other LEAs in Pennsylvania - Education	60,738.26			
6991 Refunds of a Prior Year Expenditure	27,726.60			
6992 Energy Efficiency Revenues and Incentives	601.37			
6999 Other Revenues Not Specified Above	137,946.00			
TOTAL Revenue from Local Sources	\$26,248,712.82			\$24,358,225.51

	Revenue Reported In Current Year			
<u>Revenue from State Sources</u>				
7111 Basic Education Funding-Formula	10,490,949.51			
7112 Basic Education Funding-Social Security	899,896.52			
7160 Tuition for Orphans Subsidy	51,185.72			
7271 Special Education funds for School-Aged Pupils	2,175,298.17			
7311 Pupil Transportation Subsidy	1,178,079.75			
7312 Nonpublic and Charter School Pupil Transportation Subsidy	18,480.00			
7320 Rental and Sinking Fund Payments / Building Reimbursement Subsidy	784,164.21			
7330 Health Services (Medical, Dental, Nurse, Act 25)	41,695.27			
7340 State Property Tax Reduction Allocation	1,637,976.50			
7362 School Mental Health & Safety and Security Grants	18,660.39			
7505 Ready to Learn Block Grant	453,629.00			
7820 State Share of Retirement Contributions	4,302,887.99			
TOTAL Revenue from State Sources	\$22,052,903.03			

Revenue Reported In Current Year				
Revenue from Federal Sources				
8514 Title I - Improving the Academic Achievement of the Disadvantaged	343,553.98			
8515 Title II - Preparing, Training, and Recruiting High Quality Teachers and Principals	60,886.00			
8517 Title IV - 21st Century Schools	23,012.00			
8742 Governor's Emergency Education Relief Fund (GEER)	22,727.00			
8744 ARP ESSER - Elementary and Secondary School Emergency Relief Fund	1,662,644.00			
8749 Other CARES Act Funding	28,728.49			
8751 ARP ESSER Learning Loss	14,976.59			
8752 ARP ESSER Summer Programs	0.14			
8753 ARP ESSER Afterschool Programs	36.30			
8755 ARP ESSER Emergency Relief for Other Educational Entities	32,787.30			
8810 School-Based Access Medicaid Reimbursement Program (SBAP) Reimbursements (Access)	217,475.73			
8820 Medical Assistance Reimbursement for Administrative Claiming (Quarterly) Program	7,678.05			
TOTAL Revenue from Federal Sources	\$2,414,505.58			

Revenue Reported In Current Year				
<u>Other Financing Sources</u>				
9350	Enterprise Fund Transfers	2,829.47		
9400	Sale of or Compensation for Loss of Fixed Assets	9,190.00		
9990	Insurance Recoveries	2,190,942.74		
TOTAL Other Financing Sources		\$2,202,962.21		
TOTAL FROM ALL SOURCES		\$52,919,083.64		\$24,358,225.51

LEA : 103023153 Elizabeth Forward SD

Printed 11/28/2023 11:28:16 AM

	<u>General Fund (10)</u>	<u>Student Sponsored Activity Fund (21)</u>	<u>Public Purpose Trust (27)</u>	<u>Other Compt Approved (28)</u>	<u>Athletic / Activity (29)</u>	<u>Capital Reserve (690, 1850) (31)</u>
6000 Revenue from Local Sources						
6111 Current Real Estate Taxes	20,288,323.91					
6113 Public Utility Realty Taxes	22,587.00					
6143 Current Act 511 Local Services Taxes	25,018.30					
6151 Current Act 511 Earned Income Taxes	2,580,361.03					
6153 Current Act 511 Real Estate Transfer Taxes	202,705.73					
6411 Delinquent Real Estate Taxes	1,118,516.49					
6451 Delinquent Act 511 Earned Income Taxes	120,713.05					
6500 Earnings on Investments	527,560.39					
6700 Revenues from LEA Activities	68,724.05					
6832 Federal IDEA Revenue Received as Pass Through	503,539.02					
6910 Rentals	412,843.92					
6920 Contributions and Donations from Private Sources	150,807.70					
6944 Receipts from Other LEAs in Pennsylvania - Education	60,738.26					
6991 Refunds of a Prior Year Expenditure	27,726.60					
6992 Energy Efficiency Revenues and Incentives	601.37					
6999 Other Revenues Not Specified Above	137,946.00					
6000 Total Revenue from Local Sources	\$26,248,712.82					
7000 Revenue from State Sources						
7111 Basic Education Funding-Formula	10,490,949.51					
7112 Basic Education Funding-Social Security	899,896.52					
7160 Tuition for Orphans Subsidy	51,185.72					
7271 Special Education funds for School-Aged Pupils	2,175,298.17					
7311 Pupil Transportation Subsidy	1,178,079.75					
7312 Nonpublic and Charter School Pupil Transportation Subsidy	18,480.00					
7320 Rental and Sinking Fund Payments / Building Reimbursement Subsidy	784,164.21					
7330 Health Services (Medical, Dental, Nurse, Act 25)	41,695.27					
7340 State Property Tax Reduction Allocation	1,637,976.50					
7362 School Mental Health & Safety and Security Grants	18,660.39					
7505 Ready to Learn Block Grant	453,629.00					
7820 State Share of Retirement Contributions	4,302,887.99					
7000 Total Revenue from State Sources	\$22,052,903.03					
8000 Revenue from Federal Sources						
8514 Title I - Improving the Academic Achievement of the Disadvantaged	343,553.98					

LEA : 103023153 Elizabeth Forward SD

Printed 11/28/2023 11:28:16 AM

	<u>Capital Reserve</u> <u>(1431) (32)</u>	<u>Other Capital</u> <u>Projects Fund (39)</u>	<u>Debt Service (40)</u>	<u>Permanent (90)</u>	<u>Total</u>
6000 Revenue from Local Sources					
6111 Current Real Estate Taxes					20,288,323.91
6113 Public Utility Realty Taxes					22,587.00
6143 Current Act 511 Local Services Taxes					25,018.30
6151 Current Act 511 Earned Income Taxes					2,580,361.03
6153 Current Act 511 Real Estate Transfer Taxes					202,705.73
6411 Delinquent Real Estate Taxes					1,118,516.49
6451 Delinquent Act 511 Earned Income Taxes					120,713.05
6500 Earnings on Investments	64,642.88		(19,119.99)		573,083.28
6700 Revenues from LEA Activities					68,724.05
6832 Federal IDEA Revenue Received as Pass Through					503,539.02
6910 Rentals					412,843.92
6920 Contributions and Donations from Private Sources					150,807.70
6944 Receipts from Other LEAs in Pennsylvania - Education					60,738.26
6991 Refunds of a Prior Year Expenditure					27,726.60
6992 Energy Efficiency Revenues and Incentives					601.37
6999 Other Revenues Not Specified Above					137,946.00
6000 Total Revenue from Local Sources	\$64,642.88		(\$19,119.99)		\$26,294,235.71
7000 Revenue from State Sources					
7111 Basic Education Funding-Formula					10,490,949.51
7112 Basic Education Funding-Social Security					899,896.52
7160 Tuition for Orphans Subsidy					51,185.72
7271 Special Education funds for School-Aged Pupils					2,175,298.17
7311 Pupil Transportation Subsidy					1,178,079.75
7312 Nonpublic and Charter School Pupil Transportation Subsidy					18,480.00
7320 Rental and Sinking Fund Payments / Building Reimbursement Subsidy					784,164.21
7330 Health Services (Medical, Dental, Nurse, Act 25)					41,695.27
7340 State Property Tax Reduction Allocation					1,637,976.50
7362 School Mental Health & Safety and Security Grants					18,660.39
7505 Ready to Learn Block Grant					453,629.00
7820 State Share of Retirement Contributions					4,302,887.99
7000 Total Revenue from State Sources					\$22,052,903.03
8000 Revenue from Federal Sources					
8514 Title I - Improving the Academic Achievement of the Disadvantaged					343,553.98

LEA : 103023153 Elizabeth Forward SD

Printed 11/28/2023 11:28:16 AM

	<u>General Fund (10)</u>	<u>Student Sponsored</u> <u>Activity Fund (21)</u>	<u>Public Purpose</u> <u>Trust (27)</u>	<u>Other Compt</u> <u>Approved (28)</u>	<u>Athletic / Activity</u> <u>(29)</u>	<u>Capital Reserve</u> <u>(690, 1850) (31)</u>
8000 Revenue from Federal Sources						
8515 Title II - Preparing, Training, and Recruiting High Quality Teachers and Principals	60,886.00					
8517 Title IV - 21st Century Schools	23,012.00					
8742 Governor's Emergency Education Relief Fund (GEER)	22,727.00					
8744 ARP ESSER - Elementary and Secondary School Emergency Relief Fund	1,662,644.00					
8749 Other CARES Act Funding	28,728.49					
8751 ARP ESSER Learning Loss	14,976.59					
8752 ARP ESSER Summer Programs	0.14					
8753 ARP ESSER Afterschool Programs	36.30					
8755 ARP ESSER Emergency Relief for Other Educational Entities	32,787.30					
8810 School-Based Access Medicaid Reimbursement Program (SBAP) Reimbursements (Access)	217,475.73					
8820 Medical Assistance Reimbursement for Administrative Claiming (Quarterly) Program	7,678.05					
8000 Total Revenue from Federal Sources	\$2,414,505.58					
9000 Other Financing Sources						
9310 General Fund Transfers						
9350 Enterprise Fund Transfers	2,829.47					
9400 Sale of or Compensation for Loss of Fixed Assets	9,190.00					
9990 Insurance Recoveries	2,190,942.74					
9000 Total Other Financing Sources	\$2,202,962.21					
Total From All Sources	\$52,919,083.64					

LEA : 103023153 Elizabeth Forward SD

Printed 11/28/2023 11:28:16 AM

	<u>Capital Reserve</u> <u>(1431) (32)</u>	<u>Other Capital</u> <u>Projects Fund (39)</u>	<u>Debt Service (40)</u>	<u>Permanent (90)</u>	<u>Total</u>
8000 Revenue from Federal Sources					
8515 Title II - Preparing, Training, and Recruiting High Quality Teachers and Principals					60,886.00
8517 Title IV - 21st Century Schools					23,012.00
8742 Governor's Emergency Education Relief Fund (GEER)					22,727.00
8744 ARP ESSER - Elementary and Secondary School Emergency Relief Fund					1,662,644.00
8749 Other CARES Act Funding					28,728.49
8751 ARP ESSER Learning Loss					14,976.59
8752 ARP ESSER Summer Programs					0.14
8753 ARP ESSER Afterschool Programs					36.30
8755 ARP ESSER Emergency Relief for Other Educational Entities					32,787.30
8810 School-Based Access Medicaid Reimbursement Program (SBAP) Reimbursements (Access)					217,475.73
8820 Medical Assistance Reimbursement for Administrative Claiming (Quarterly) Program					7,678.05
8000 Total Revenue from Federal Sources					\$2,414,505.58
9000 Other Financing Sources					
9310 General Fund Transfers	784,040.00		3,158,727.50		3,942,767.50
9350 Enterprise Fund Transfers					2,829.47
9400 Sale of or Compensation for Loss of Fixed Assets					9,190.00
9990 Insurance Recoveries					2,190,942.74
9000 Total Other Financing Sources	\$784,040.00		\$3,158,727.50		\$6,145,729.71
Total From All Sources	\$848,682.88		\$3,139,607.51		\$56,907,374.03

LEA : 103023153 Elizabeth Forward SD

Printed 11/28/2023 11:28:18 AM

	<u>General Fund (10)</u>	<u>Student Sponsored Activity Fund (21)</u>	<u>Public Purpose Trust (27)</u>	<u>Other Compt Approved (28)</u>	<u>Athletic / Activity (29)</u>	<u>Capital Reserve (690. 1850) (31)</u>
Revenue from Local Sources	26,248,712.82					
Revenue from State Sources	22,052,903.03					
Revenue from Federal Sources	2,414,505.58					
Other Financing Sources	2,202,962.21					
Total From All Sources	\$52,919,083.64					

LEA : 103023153 Elizabeth Forward SD

Printed 11/28/2023 11:28:18 AM

	<u>Capital Reserve (1431)</u> <u>(32)</u>	<u>Other Capital Projects</u> <u>Fund (39)</u>	<u>Debt Service (40)</u>	<u>Permanent (90)</u>	<u>Total</u>
Revenue from Local Sources	64,642.88		(19,119.99)		26,294,235.71
Revenue from State Sources					22,052,903.03
Revenue from Federal Sources					2,414,505.58
Other Financing Sources	784,040.00		3,158,727.50		6,145,729.71
Total From All Sources	\$848,682.88		\$3,139,607.51		\$56,907,374.03

LEA : 103023153 Elizabeth Forward SD

Printed 11/28/2023 11:28:21 AM

General Fund (10)

1000 Instruction		Total
100 <u>Personnel Services – Salaries</u>		
100 Personnel Services – Salaries		13,557,595.00
Total Personnel Services – Salaries		\$13,557,595.00
200 <u>Personnel Services – Employee Benefits</u>		
210 Group Insurance – Contracted Provider		2,818,646.43
220 Social Security Contributions		1,017,816.14
230 PSERS Retirement Contributions		4,629,894.60
250 Unemployment Compensation		25,710.19
260 Workers' Compensation		59,476.07
280 Other Post-Employment Benefits (OPEB)		141,705.95
299 All Other Employee Benefits		37,320.00
Total Personnel Services – Employee Benefits		\$8,730,569.38
300 <u>Purchased Professional and Technical Services</u>		
310 Official / Administrative Services		3,945.00
322 Professional Educational Services – Ius		280,008.57
323 Professional Educational Services – Other Educational Agencies		326,556.72
329 Professional Educational Services – Other		396,973.61
330 Other Professional Services		92,138.40
Total Purchased Professional and Technical Services		\$1,099,622.30
400 <u>Purchased Property Services</u>		
430 Repairs and Maintenance Services		47,787.88
Total Purchased Property Services		\$47,787.88
500 <u>Other Purchased Services</u>		
510 Student Transportation Services		68,115.99
530 Communications		19,597.14
550 Printing and Binding		69,151.46
561 Tuition To Other School Districts Within the State		70,918.65
562 Tuition To Pennsylvania Charter Schools		1,125,449.35
564 Tuition To Career and Technology Centers		690,162.53
567 Tuition To Approved Private Schools (APS) and PA Chartered Schools for the Deaf and Blind		189,729.81
569 Tuition – Other		32,560.00
580 Travel		1,502.14
594 IU Payment By Withholding for Institutionalized Children's Programs – Special Classes		1,696.20
Total Other Purchased Services		\$2,268,883.27
600 <u>Supplies</u>		
610 General Supplies		386,220.54
630 Food		5,182.16
640 Books and Periodicals		67,271.30
650 Supplies & Fees – Technology Related		721,685.79
Total Supplies		\$1,180,359.79
700 <u>Property</u>		
752 Capital Equipment – Original and Additional		278,553.94
756 Capitalized Technology Equipment – Original		1,241,913.62

LEA : 103023153 Elizabeth Forward SD

Printed 11/28/2023 11:28:21 AM

General Fund (10)

1000 Instruction		<u>Total</u>
Total Property		\$1,520,467.56
800 <u>Other Objects</u>		
810 Dues and Fees		2,111.00
Total Other Objects		\$2,111.00
Total 1000 Instruction		\$28,407,396.18

LEA : 103023153 Elizabeth Forward SD

Printed 11/28/2023 11:28:21 AM

General Fund (10)

1100 Regular Programs – Elementary / Secondary

	Elementary	Secondary	Federal	Total
100 <u>Personnel Services – Salaries</u>				
100 Personnel Services – Salaries	5,208,936.53	4,287,325.16	580,875.32	10,077,137.01
Total Personnel Services – Salaries	\$5,208,936.53	\$4,287,325.16	\$580,875.32	\$10,077,137.01
200 <u>Personnel Services – Employee Benefits</u>				
210 Group Insurance – Contracted Provider	1,028,754.92	770,164.11	105,801.86	1,904,720.89
220 Social Security Contributions	390,549.60	322,408.92	43,599.42	756,557.94
230 PSERS Retirement Contributions	1,788,027.20	1,453,095.89	199,850.89	3,440,973.98
250 Unemployment Compensation	13,245.89	12,464.30		25,710.19
260 Workers' Compensation	22,567.90	19,445.38	2,497.70	44,510.98
280 Other Post-Employment Benefits (OPEB)	73,006.90	68,699.05		141,705.95
299 All Other Employee Benefits	16,548.06	20,771.94		37,320.00
Total Personnel Services – Employee Benefits	\$3,332,700.47	\$2,667,049.59	\$351,749.87	\$6,351,499.93
300 <u>Purchased Professional and Technical Services</u>				
310 Official / Administrative Services	1,295.00	2,650.00		3,945.00
322 Professional Educational Services – Ius	29,222.09	5,672.63		34,894.72
329 Professional Educational Services – Other	295,450.02	101,523.59		396,973.61
Total Purchased Professional and Technical Services	\$325,967.11	\$109,846.22		\$435,813.33
400 <u>Purchased Property Services</u>				
430 Repairs and Maintenance Services	19,058.95	28,728.93		47,787.88
Total Purchased Property Services	\$19,058.95	\$28,728.93		\$47,787.88
500 <u>Other Purchased Services</u>				
550 Printing and Binding	36,171.15	32,980.31		69,151.46
562 Tuition To Pennsylvania Charter Schools	327,067.54	307,768.52		634,836.06
580 Travel	805.11	697.03		1,502.14
Total Other Purchased Services	\$364,043.80	\$341,445.86		\$705,489.66
600 <u>Supplies</u>				
610 General Supplies	155,391.61	130,819.85	13,183.26	299,394.72
640 Books and Periodicals	33,730.79	33,540.51		67,271.30
650 Supplies & Fees – Technology Related	100,811.48	119,867.78	440,614.61	661,293.87
Total Supplies	\$289,933.88	\$284,228.14	\$453,797.87	\$1,027,959.89
700 <u>Property</u>				
752 Capital Equipment – Original and Additional	180,618.99	97,934.95		278,553.94
756 Capitalized Technology Equipment – Original	5,612.52	21,149.61	1,215,151.49	1,241,913.62
Total Property	\$186,231.51	\$119,084.56	\$1,215,151.49	\$1,520,467.56
Total 1100 Regular Programs – Elementary / Secondary	\$9,726,872.25	\$7,837,708.46	\$2,601,574.55	\$20,166,155.26

LEA : 103023153 Elizabeth Forward SD

Printed 11/28/2023 11:28:21 AM

General Fund (10)

1110 Regular Programs

	<u>Elementary</u>	<u>Secondary</u>	<u>Federal</u>	<u>Total</u>
100 <u>Personnel Services – Salaries</u>				
100 Personnel Services – Salaries	5,208,936.53	4,287,325.16	214,703.12	9,710,964.81
Total Personnel Services – Salaries	\$5,208,936.53	\$4,287,325.16	\$214,703.12	\$9,710,964.81
200 <u>Personnel Services – Employee Benefits</u>				
210 Group Insurance – Contracted Provider	1,028,754.92	770,164.11	19,921.64	1,818,840.67
220 Social Security Contributions	390,549.60	322,408.92	16,224.50	729,183.02
230 PSERS Retirement Contributions	1,788,027.20	1,453,095.89	70,738.56	3,311,861.65
250 Unemployment Compensation	13,245.89	12,464.30		25,710.19
260 Workers' Compensation	22,567.90	19,445.38	923.27	42,936.55
280 Other Post-Employment Benefits (OPEB)	73,006.90	68,699.05		141,705.95
299 All Other Employee Benefits	16,548.06	20,771.94		37,320.00
Total Personnel Services – Employee Benefits	\$3,332,700.47	\$2,667,049.59	\$107,807.97	\$6,107,558.03
300 <u>Purchased Professional and Technical Services</u>				
310 Official / Administrative Services	1,295.00	2,650.00		3,945.00
322 Professional Educational Services – Ius	29,222.09	5,672.63		34,894.72
329 Professional Educational Services – Other	295,450.02	101,523.59		396,973.61
Total Purchased Professional and Technical Services	\$325,967.11	\$109,846.22		\$435,813.33
400 <u>Purchased Property Services</u>				
430 Repairs and Maintenance Services	19,058.95	28,728.93		47,787.88
Total Purchased Property Services	\$19,058.95	\$28,728.93		\$47,787.88
500 <u>Other Purchased Services</u>				
550 Printing and Binding	36,171.15	32,980.31		69,151.46
562 Tuition To Pennsylvania Charter Schools	327,067.54	307,768.52		634,836.06
580 Travel	805.11	697.03		1,502.14
Total Other Purchased Services	\$364,043.80	\$341,445.86		\$705,489.66
600 <u>Supplies</u>				
610 General Supplies	155,391.61	130,819.85	13,183.26	299,394.72
640 Books and Periodicals	33,730.79	33,540.51		67,271.30
650 Supplies & Fees – Technology Related	100,811.48	119,867.78	440,614.61	661,293.87
Total Supplies	\$289,933.88	\$284,228.14	\$453,797.87	\$1,027,959.89
700 <u>Property</u>				
752 Capital Equipment – Original and Additional	180,618.99	97,934.95		278,553.94
756 Capitalized Technology Equipment – Original	5,612.52	21,149.61	1,215,151.49	1,241,913.62
Total Property	\$186,231.51	\$119,084.56	\$1,215,151.49	\$1,520,467.56
Total 1110 Regular Programs	\$9,726,872.25	\$7,837,708.46	\$1,991,460.45	\$19,556,041.16

LEA : 103023153 Elizabeth Forward SD

Printed 11/28/2023 11:28:21 AM

General Fund (10)

1190 Federally-Funded Regular Programs	<u>Elementary</u>	<u>Secondary</u>	<u>Federal</u>	<u>Total</u>
100 <u>Personnel Services – Salaries</u>				
100 Personnel Services – Salaries			366,172.20	366,172.20
Total Personnel Services – Salaries			\$366,172.20	\$366,172.20
200 <u>Personnel Services – Employee Benefits</u>				
210 Group Insurance – Contracted Provider			85,880.22	85,880.22
220 Social Security Contributions			27,374.92	27,374.92
230 PSERS Retirement Contributions			129,112.33	129,112.33
260 Workers' Compensation			1,574.43	1,574.43
Total Personnel Services – Employee Benefits			\$243,941.90	\$243,941.90
Total 1190 Federally-Funded Regular Programs			\$610,114.10	\$610,114.10

LEA : 103023153 Elizabeth Forward SD

Printed 11/28/2023 11:28:21 AM

General Fund (10)

1200 Special Programs – Elementary / Secondary	Elementary	Secondary	Federal	Total
100 Personnel Services – Salaries				
100 Personnel Services – Salaries	1,531,471.64	1,096,836.59	18,434.08	2,646,742.31
Total Personnel Services – Salaries	\$1,531,471.64	\$1,096,836.59	\$18,434.08	\$2,646,742.31
200 Personnel Services – Employee Benefits				
210 Group Insurance – Contracted Provider	435,272.51	338,884.00	15,437.06	789,593.57
220 Social Security Contributions	114,716.70	82,222.76	1,307.26	198,246.72
230 PSERS Retirement Contributions	517,452.63	376,376.81	6,499.85	900,329.29
260 Workers' Compensation	6,585.18	4,716.35	79.28	11,380.81
Total Personnel Services – Employee Benefits	\$1,074,027.02	\$802,199.92	\$23,323.45	\$1,899,550.39
300 Purchased Professional and Technical Services				
322 Professional Educational Services – Ius	79,745.54	89,770.47	71,230.84	240,746.85
323 Professional Educational Services – Other Educational Agencies	129,601.08	175,373.82		304,974.90
330 Other Professional Services			90,103.40	90,103.40
Total Purchased Professional and Technical Services	\$209,346.62	\$265,144.29	\$161,334.24	\$635,825.15
500 Other Purchased Services				
510 Student Transportation Services	2,617.81	13,046.74		15,664.55
530 Communications	10,096.45	9,500.69		19,597.14
561 Tuition To Other School Districts Within the State	36,537.29	34,381.36		70,918.65
562 Tuition To Pennsylvania Charter Schools	252,763.97	237,849.32		490,613.29
567 Tuition To Approved Private Schools (APS) and PA Chartered Schools for the Deaf and Blind	97,748.80	91,981.01		189,729.81
594 IU Payment By Withholding for Institutionalized Children's Programs – Special Classes	873.88	822.32		1,696.20
Total Other Purchased Services	\$400,638.20	\$387,581.44		\$788,219.64
600 Supplies				
610 General Supplies	11,608.23	7,429.94	27,241.38	46,279.55
630 Food	716.00	4,466.16		5,182.16
650 Supplies & Fees – Technology Related	22,306.62	35,085.30		57,391.92
Total Supplies	\$34,630.85	\$46,981.40	\$27,241.38	\$108,853.63
800 Other Objects				
810 Dues and Fees	869.21	1,241.79		2,111.00
Total Other Objects	\$869.21	\$1,241.79		\$2,111.00
Total 1200 Special Programs – Elementary / Secondary	\$3,250,983.54	\$2,599,985.43	\$230,333.15	\$6,081,302.12

LEA : 103023153 Elizabeth Forward SD

Printed 11/28/2023 11:28:21 AM

General Fund (10)

1210 Life Skills Support

	<u>Elementary</u>	<u>Secondary</u>	<u>Federal</u>	<u>Total</u>
100 <u>Personnel Services – Salaries</u>				
100 Personnel Services – Salaries	240,131.45	163,822.00		403,953.45
Total Personnel Services – Salaries	\$240,131.45	\$163,822.00		\$403,953.45
200 <u>Personnel Services – Employee Benefits</u>				
210 Group Insurance – Contracted Provider	91,830.29	97,287.40		189,117.69
220 Social Security Contributions	18,066.52	12,178.38		30,244.90
230 PSERS Retirement Contributions	76,445.77	55,263.40		131,709.17
260 Workers' Compensation	1,032.72	704.57		1,737.29
Total Personnel Services – Employee Benefits	\$187,375.30	\$165,433.75		\$352,809.05
300 <u>Purchased Professional and Technical Services</u>				
323 Professional Educational Services – Other Educational Agencies		53,420.00		53,420.00
Total Purchased Professional and Technical Services		\$53,420.00		\$53,420.00
500 <u>Other Purchased Services</u>				
510 Student Transportation Services	1,324.07	9,772.17		11,096.24
Total Other Purchased Services	\$1,324.07	\$9,772.17		\$11,096.24
600 <u>Supplies</u>				
610 General Supplies	806.74	5,321.42		6,128.16
630 Food	716.00	4,466.16		5,182.16
Total Supplies	\$1,522.74	\$9,787.58		\$11,310.32
Total 1210 Life Skills Support	\$430,353.56	\$402,235.50		\$832,589.06

LEA : 103023153 Elizabeth Forward SD

Printed 11/28/2023 11:28:21 AM

General Fund (10)

1220 Sensory Support	Elementary	Secondary	Federal	Total
100 <u>Personnel Services – Salaries</u>				
100 Personnel Services – Salaries	142,186.93	37,437.86		179,624.79
Total Personnel Services – Salaries	\$142,186.93	\$37,437.86		\$179,624.79
200 <u>Personnel Services – Employee Benefits</u>				
210 Group Insurance – Contracted Provider	32,581.20	12,829.24		45,410.44
220 Social Security Contributions	10,641.86	2,761.45		13,403.31
230 PSERS Retirement Contributions	48,783.49	12,495.09		61,278.58
260 Workers' Compensation	611.24	160.93		772.17
Total Personnel Services – Employee Benefits	\$92,617.79	\$28,246.71		\$120,864.50
300 <u>Purchased Professional and Technical Services</u>				
322 Professional Educational Services – Ius	32,419.81	40,022.96		72,442.77
Total Purchased Professional and Technical Services	\$32,419.81	\$40,022.96		\$72,442.77
600 <u>Supplies</u>				
610 General Supplies	440.33			440.33
Total Supplies	\$440.33			\$440.33
Total 1220 Sensory Support	\$267,664.86	\$105,707.53		\$373,372.39

LEA : 103023153 Elizabeth Forward SD

Printed 11/28/2023 11:28:21 AM

General Fund (10)

1230 Emotional Support

	<u>Elementary</u>	<u>Secondary</u>	<u>Federal</u>	<u>Total</u>
100 <u>Personnel Services – Salaries</u>				
100 Personnel Services – Salaries	780.78			780.78
Total Personnel Services – Salaries	\$780.78			\$780.78
200 <u>Personnel Services – Employee Benefits</u>				
210 Group Insurance – Contracted Provider	2,768.26			2,768.26
220 Social Security Contributions	59.73			59.73
230 PSERS Retirement Contributions	275.30			275.30
260 Workers' Compensation	3.36			3.36
Total Personnel Services – Employee Benefits	\$3,106.65			\$3,106.65
Total 1230 Emotional Support	\$3,887.43			\$3,887.43

LEA : 103023153 Elizabeth Forward SD

Printed 11/28/2023 11:28:21 AM

General Fund (10)

1240 Academic Support

	<u>Elementary</u>	<u>Secondary</u>	<u>Federal</u>	<u>Total</u>
100 <u>Personnel Services – Salaries</u>				
100 Personnel Services – Salaries	1,101,423.85	851,398.36	18,434.08	1,971,256.29
Total Personnel Services – Salaries	\$1,101,423.85	\$851,398.36	\$18,434.08	\$1,971,256.29
200 <u>Personnel Services – Employee Benefits</u>				
210 Group Insurance – Contracted Provider	308,092.76	228,767.36	15,437.06	552,297.18
220 Social Security Contributions	82,407.19	63,950.49	1,307.26	147,664.94
230 PSERS Retirement Contributions	375,394.04	293,041.08	6,499.85	674,934.97
260 Workers' Compensation	4,736.05	3,660.94	79.28	8,476.27
Total Personnel Services – Employee Benefits	\$770,630.04	\$589,419.87	\$23,323.45	\$1,383,373.36
500 <u>Other Purchased Services</u>				
510 Student Transportation Services	1,293.74	3,274.57		4,568.31
Total Other Purchased Services	\$1,293.74	\$3,274.57		\$4,568.31
600 <u>Supplies</u>				
610 General Supplies	10,361.16	2,108.52	262.00	12,731.68
650 Supplies & Fees – Technology Related	11,332.86	24,759.06		36,091.92
Total Supplies	\$21,694.02	\$26,867.58	\$262.00	\$48,823.60
800 <u>Other Objects</u>				
810 Dues and Fees	869.21	1,241.79		2,111.00
Total Other Objects	\$869.21	\$1,241.79		\$2,111.00
Total 1240 Academic Support	\$1,895,910.86	\$1,472,202.17	\$42,019.53	\$3,410,132.56

LEA : 103023153 Elizabeth Forward SD

Printed 11/28/2023 11:28:21 AM

General Fund (10)				
1241 Learning Support – Public	<u>Elementary</u>	<u>Secondary</u>	<u>Federal</u>	<u>Total</u>
100 <u>Personnel Services – Salaries</u>				
100 Personnel Services – Salaries	987,675.24	727,622.97	18,434.08	1,733,732.29
Total Personnel Services – Salaries	\$987,675.24	\$727,622.97	\$18,434.08	\$1,733,732.29
200 <u>Personnel Services – Employee Benefits</u>				
210 Group Insurance – Contracted Provider	307,760.96	205,933.09	15,437.06	529,131.11
220 Social Security Contributions	73,708.30	54,594.49	1,307.26	129,610.05
230 PSERS Retirement Contributions	337,754.37	249,397.76	6,499.85	593,651.98
260 Workers' Compensation	4,246.97	3,128.76	79.28	7,455.01
Total Personnel Services – Employee Benefits	\$723,470.60	\$513,054.10	\$23,323.45	\$1,259,848.15
600 <u>Supplies</u>				
610 General Supplies	5,074.23	1,877.82	262.00	7,214.05
650 Supplies & Fees – Technology Related	11,332.86	24,759.06		36,091.92
Total Supplies	\$16,407.09	\$26,636.88	\$262.00	\$43,305.97
Total 1241 Learning Support – Public	\$1,727,552.93	\$1,267,313.95	\$42,019.53	\$3,036,886.41

LEA : 103023153 Elizabeth Forward SD

Printed 11/28/2023 11:28:21 AM

General Fund (10)

1243 Gifted Support	Elementary	Secondary	Federal	Total
100 <u>Personnel Services – Salaries</u>				
100 Personnel Services – Salaries	113,748.61	123,775.39		237,524.00
Total Personnel Services – Salaries	\$113,748.61	\$123,775.39		\$237,524.00
200 <u>Personnel Services – Employee Benefits</u>				
210 Group Insurance – Contracted Provider	331.80	22,834.27		23,166.07
220 Social Security Contributions	8,698.89	9,356.00		18,054.89
230 PSERS Retirement Contributions	37,639.67	43,643.32		81,282.99
260 Workers' Compensation	489.08	532.18		1,021.26
Total Personnel Services – Employee Benefits	\$47,159.44	\$76,365.77		\$123,525.21
500 <u>Other Purchased Services</u>				
510 Student Transportation Services	1,293.74	3,274.57		4,568.31
Total Other Purchased Services	\$1,293.74	\$3,274.57		\$4,568.31
600 <u>Supplies</u>				
610 General Supplies	5,286.93	230.70		5,517.63
Total Supplies	\$5,286.93	\$230.70		\$5,517.63
800 <u>Other Objects</u>				
810 Dues and Fees	869.21	1,241.79		2,111.00
Total Other Objects	\$869.21	\$1,241.79		\$2,111.00
Total 1243 Gifted Support	\$168,357.93	\$204,888.22		\$373,246.15

LEA : 103023153 Elizabeth Forward SD

Printed 11/28/2023 11:28:21 AM

General Fund (10)

1260 Physical Support

Elementary Secondary Federal Total

300 Purchased Professional and Technical Services

322 Professional Educational Services – lus 70,480.84 70,480.84

Total Purchased Professional and Technical Services \$70,480.84 \$70,480.84

Total 1260 Physical Support \$70,480.84 \$70,480.84

LEA : 103023153 Elizabeth Forward SD

Printed 11/28/2023 11:28:21 AM

General Fund (10)				
1270 Multi-Handicapped Support	<u>Elementary</u>	<u>Secondary</u>	<u>Federal</u>	<u>Total</u>
300 <u>Purchased Professional and Technical Services</u>				
330 Other Professional Services			90,103.40	90,103.40
Total Purchased Professional and Technical Services			\$90,103.40	\$90,103.40
600 <u>Supplies</u>				
610 General Supplies			26,979.38	26,979.38
Total Supplies			\$26,979.38	\$26,979.38
Total 1270 Multi-Handicapped Support			\$117,082.78	\$117,082.78

LEA : 103023153 Elizabeth Forward SD

Printed 11/28/2023 11:28:21 AM

General Fund (10)

1280 Early Intervention Support

<u>Elementary</u>	<u>Secondary</u>	<u>Federal</u>	<u>Total</u>
-------------------	------------------	----------------	--------------

300 Purchased Professional and Technical Services

322 Professional Educational Services – lus		750.00	750.00
---	--	--------	--------

Total Purchased Professional and Technical Services		\$750.00	\$750.00
--	--	-----------------	-----------------

Total 1280 Early Intervention Support		\$750.00	\$750.00
--	--	-----------------	-----------------

LEA : 103023153 Elizabeth Forward SD

Printed 11/28/2023 11:28:21 AM

General Fund (10)

1290 Special Programs - Other Support	Elementary	Secondary	Federal	Total
100 Personnel Services – Salaries				
100 Personnel Services – Salaries	46,948.63	44,178.37		91,127.00
Total Personnel Services – Salaries	\$46,948.63	\$44,178.37		\$91,127.00
200 Personnel Services – Employee Benefits				
220 Social Security Contributions	3,541.40	3,332.44		6,873.84
230 PSERS Retirement Contributions	16,554.03	15,577.24		32,131.27
260 Workers’ Compensation	201.81	189.91		391.72
Total Personnel Services – Employee Benefits	\$20,297.24	\$19,099.59		\$39,396.83
300 Purchased Professional and Technical Services				
322 Professional Educational Services – Ius	47,325.73	49,747.51		97,073.24
323 Professional Educational Services – Other Educational Agencies	129,601.08	121,953.82		251,554.90
Total Purchased Professional and Technical Services	\$176,926.81	\$171,701.33		\$348,628.14
500 Other Purchased Services				
530 Communications	10,096.45	9,500.69		19,597.14
561 Tuition To Other School Districts Within the State	36,537.29	34,381.36		70,918.65
562 Tuition To Pennsylvania Charter Schools	252,763.97	237,849.32		490,613.29
567 Tuition To Approved Private Schools (APS) and PA Chartered Schools for the Deaf and Blind	97,748.80	91,981.01		189,729.81
594 IU Payment By Withholding for Institutionalized Children’s Programs – Special Classes	873.88	822.32		1,696.20
Total Other Purchased Services	\$398,020.39	\$374,534.70		\$772,555.09
600 Supplies				
650 Supplies & Fees – Technology Related	10,973.76	10,326.24		21,300.00
Total Supplies	\$10,973.76	\$10,326.24		\$21,300.00
Total 1290 Special Programs - Other Support	\$653,166.83	\$619,840.23		\$1,273,007.06

LEA : 103023153 Elizabeth Forward SD

Printed 11/28/2023 11:28:21 AM

General Fund (10)

1300 Vocational Education

	<u>Elementary</u>	<u>Secondary</u>	<u>Federal</u>	<u>Total</u>
100 <u>Personnel Services – Salaries</u>				
100 Personnel Services – Salaries		771,550.10		771,550.10
Total Personnel Services – Salaries		\$771,550.10		\$771,550.10
200 <u>Personnel Services – Employee Benefits</u>				
210 Group Insurance – Contracted Provider		124,331.97		124,331.97
220 Social Security Contributions		58,306.97		58,306.97
230 PSERS Retirement Contributions		266,671.64		266,671.64
260 Workers' Compensation		3,317.27		3,317.27
Total Personnel Services – Employee Benefits		\$452,627.85		\$452,627.85
500 <u>Other Purchased Services</u>				
564 Tuition To Career and Technology Centers		690,162.53		690,162.53
Total Other Purchased Services		\$690,162.53		\$690,162.53
600 <u>Supplies</u>				
610 General Supplies		36,071.04		36,071.04
650 Supplies & Fees – Technology Related		3,000.00		3,000.00
Total Supplies		\$39,071.04		\$39,071.04
Total 1300 Vocational Education		\$1,953,411.52		\$1,953,411.52

LEA : 103023153 Elizabeth Forward SD

Printed 11/28/2023 11:28:21 AM

General Fund (10)				
1400 Other Instructional Programs – Elementary / Secondary	<u>Elementary</u>	<u>Secondary</u>	<u>Federal</u>	<u>Total</u>
100 <u>Personnel Services – Salaries</u>				
100 Personnel Services – Salaries	30,863.02	17,661.85	13,640.71	62,165.58
Total Personnel Services – Salaries	\$30,863.02	\$17,661.85	\$13,640.71	\$62,165.58
200 <u>Personnel Services – Employee Benefits</u>				
220 Social Security Contributions	2,350.13	1,332.43	1,021.95	4,704.51
230 PSERS Retirement Contributions	10,882.36	6,227.64	4,809.69	21,919.69
260 Workers’ Compensation	132.56	75.81	58.64	267.01
Total Personnel Services – Employee Benefits	\$13,365.05	\$7,635.88	\$5,890.28	\$26,891.21
300 <u>Purchased Professional and Technical Services</u>				
323 Professional Educational Services – Other Educational Agencies			21,581.82	21,581.82
330 Other Professional Services			2,035.00	2,035.00
Total Purchased Professional and Technical Services			\$23,616.82	\$23,616.82
500 <u>Other Purchased Services</u>				
510 Student Transportation Services			52,451.44	52,451.44
569 Tuition – Other		32,560.00		32,560.00
Total Other Purchased Services		\$32,560.00	\$52,451.44	\$85,011.44
600 <u>Supplies</u>				
610 General Supplies	743.32	3,731.91		4,475.23
Total Supplies	\$743.32	\$3,731.91		\$4,475.23
Total 1400 Other Instructional Programs – Elementary / Secondary	\$44,971.39	\$61,589.64	\$95,599.25	\$202,160.28

LEA : 103023153 Elizabeth Forward SD

Printed 11/28/2023 11:28:21 AM

General Fund (10)

1420 Summer School	Elementary	Secondary	Federal	Total
100 Personnel Services – Salaries				
100 Personnel Services – Salaries	24,508.80	6,962.12	13,640.71	45,111.63
Total Personnel Services – Salaries	\$24,508.80	\$6,962.12	\$13,640.71	\$45,111.63
200 Personnel Services – Employee Benefits				
220 Social Security Contributions	1,871.53	526.62	1,021.95	3,420.10
230 PSERS Retirement Contributions	8,641.80	2,454.84	4,809.69	15,906.33
260 Workers’ Compensation	105.32	29.94	58.64	193.90
Total Personnel Services – Employee Benefits	\$10,618.65	\$3,011.40	\$5,890.28	\$19,520.33
300 Purchased Professional and Technical Services				
323 Professional Educational Services – Other Educational Agencies			21,581.82	21,581.82
330 Other Professional Services			2,035.00	2,035.00
Total Purchased Professional and Technical Services			\$23,616.82	\$23,616.82
500 Other Purchased Services				
510 Student Transportation Services			52,451.44	52,451.44
Total Other Purchased Services			\$52,451.44	\$52,451.44
600 Supplies				
610 General Supplies	743.32	3,731.91		4,475.23
Total Supplies	\$743.32	\$3,731.91		\$4,475.23
Total 1420 Summer School	\$35,870.77	\$13,705.43	\$95,599.25	\$145,175.45

General Fund (10)

1430 Homebound Instruction	<u>Elementary</u>	<u>Secondary</u>	<u>Federal</u>	<u>Total</u>
100 <u>Personnel Services – Salaries</u>				
100 Personnel Services – Salaries	2,791.07	1,660.93		4,452.00
Total Personnel Services – Salaries	\$2,791.07	\$1,660.93		\$4,452.00
200 <u>Personnel Services – Employee Benefits</u>				
220 Social Security Contributions	210.36	125.18		335.54
230 PSERS Retirement Contributions	984.14	585.63		1,569.77
260 Workers’ Compensation	11.97	7.13		19.10
Total Personnel Services – Employee Benefits	\$1,206.47	\$717.94		\$1,924.41
Total 1430 Homebound Instruction	\$3,997.54	\$2,378.87		\$6,376.41

LEA : 103023153 Elizabeth Forward SD

Printed 11/28/2023 11:28:21 AM

General Fund (10)				
1440 Alternative Regular Education Programs	<u>Elementary</u>	<u>Secondary</u>	<u>Federal</u>	<u>Total</u>
500 <u>Other Purchased Services</u>				
569 Tuition – Other		32,560.00		32,560.00
Total Other Purchased Services		\$32,560.00		\$32,560.00
Total 1440 Alternative Regular Education Programs		\$32,560.00		\$32,560.00

LEA : 103023153 Elizabeth Forward SD

Printed 11/28/2023 11:28:21 AM

General Fund (10)

1442 Alternative Education Programs	<u>Elementary</u>	<u>Secondary</u>	<u>Federal</u>	<u>Total</u>
500 <u>Other Purchased Services</u>				
569 Tuition – Other		32,560.00		32,560.00
Total Other Purchased Services		\$32,560.00		\$32,560.00
Total 1442 Alternative Education Programs		\$32,560.00		\$32,560.00

General Fund (10)

1450 Instructional Programs Outside the Established School Day	<u>Elementary</u>	<u>Secondary</u>	<u>Federal</u>	<u>Total</u>
100 <u>Personnel Services – Salaries</u>				
100 Personnel Services – Salaries	3,563.15	9,038.80		12,601.95
Total Personnel Services – Salaries	\$3,563.15	\$9,038.80		\$12,601.95
200 <u>Personnel Services – Employee Benefits</u>				
220 Social Security Contributions	268.24	680.63		948.87
230 PSERS Retirement Contributions	1,256.42	3,187.17		4,443.59
260 Workers’ Compensation	15.27	38.74		54.01
Total Personnel Services – Employee Benefits	\$1,539.93	\$3,906.54		\$5,446.47
Total 1450 Instructional Programs Outside the Established School Day	\$5,103.08	\$12,945.34		\$18,048.42

LEA : 103023153 Elizabeth Forward SD

Printed 11/28/2023 11:28:21 AM

General Fund (10)

1500 Nonpublic School Programs

	<u>Elementary</u>	<u>Secondary</u>	<u>Federal</u>	<u>Total</u>
300 <u>Purchased Professional and Technical Services</u>				
322 Professional Educational Services – lus			4,367.00	4,367.00
Total Purchased Professional and Technical Services			\$4,367.00	\$4,367.00
Total 1500 Nonpublic School Programs			\$4,367.00	\$4,367.00

LEA : 103023153 Elizabeth Forward SD

Printed 11/28/2023 11:28:25 AM

General Fund (10)

2000 Support Services

Total

100	<u>Personnel Services – Salaries</u>	
100	Personnel Services – Salaries	5,882,797.82
Total Personnel Services – Salaries		\$5,882,797.82
200	<u>Personnel Services – Employee Benefits</u>	
210	Group Insurance – Contracted Provider	1,225,108.83
220	Social Security Contributions	440,480.62
230	PSERS Retirement Contributions	1,958,363.77
240	Tuition Reimbursement	3,034.50
250	Unemployment Compensation	6,216.32
260	Workers' Compensation	25,348.95
299	All Other Employee Benefits	30,711.33
Total Personnel Services – Employee Benefits		\$3,689,264.32
300	<u>Purchased Professional and Technical Services</u>	
310	Official / Administrative Services	37,959.32
322	Professional Educational Services – Ius	10,850.00
330	Other Professional Services	405,827.42
350	Security / Safety Services	63,284.27
360	Employee Training and Development Services	74,672.05
Total Purchased Professional and Technical Services		\$592,593.06
400	<u>Purchased Property Services</u>	
410	Cleaning Services	43,004.99
420	Utility Services	188,995.58
430	Repairs and Maintenance Services	420,504.84
440	Rentals	4,811.16
460	Extermination Services	16,175.60
Total Purchased Property Services		\$673,492.17
500	<u>Other Purchased Services</u>	
511	Student Transportation Services from Another LEA Within the State	71,562.02
513	Contracted Carriers	2,723,545.85
516	Student Transportation Services From the IU	48.51
520	Insurance – General	37,346.00
523	General Property and Liability Insurance	160,242.00
530	Communications	139,563.56
549	Other Advertising/Public Relations	20,880.17
550	Printing and Binding	29,469.96
580	Travel	101,205.13
595	IU Payments By Withholding	23,308.72
Total Other Purchased Services		\$3,307,171.92
600	<u>Supplies</u>	
610	General Supplies	526,974.81
620	Energy	580,276.74
630	Food	36,711.65
640	Books and Periodicals	24,060.96
650	Supplies & Fees – Technology Related	148,331.57

LEA : 103023153 Elizabeth Forward SD

Printed 11/28/2023 11:28:25 AM

General Fund (10)

2000 Support Services

Total

Total Supplies		\$1,316,355.73
700 <u>Property</u>		
752	Capital Equipment – Original and Additional	28,600.62
756	Capitalized Technology Equipment – Original	71,611.74
Total Property		\$100,212.36
800 <u>Other Objects</u>		
810	Dues and Fees	60,789.48
Total Other Objects		\$60,789.48
Total 2000 Support Services		\$15,622,676.86

LEA : 103023153 Elizabeth Forward SD

Printed 11/28/2023 11:28:25 AM

General Fund (10)				
2100 Support Services – Students	<u>Elementary</u>	<u>Secondary</u>	<u>Federal</u>	<u>Total</u>
100 <u>Personnel Services – Salaries</u>				
100 Personnel Services – Salaries	237,616.30	349,628.75	81,610.69	717,134.19
Total Personnel Services – Salaries	\$237,616.30	\$349,628.75	\$81,610.69	\$717,134.19
200 <u>Personnel Services – Employee Benefits</u>				
210 Group Insurance – Contracted Provider	66,704.40	92,120.59	21,874.06	201,159.65
220 Social Security Contributions	17,895.44	26,384.44	6,137.44	53,847.72
230 PSERS Retirement Contributions	78,968.20	120,300.78	27,953.34	243,929.97
260 Workers' Compensation	1,021.62	1,503.23	350.89	3,083.37
Total Personnel Services – Employee Benefits	\$164,589.66	\$240,309.04	\$56,315.73	\$502,020.71
300 <u>Purchased Professional and Technical Services</u>				
330 Other Professional Services	1,033.62	972.63	24,750.00	62,589.59
Total Purchased Professional and Technical Services	\$1,033.62	\$972.63	\$24,750.00	\$62,589.59
500 <u>Other Purchased Services</u>				
580 Travel	816.67			1,410.67
Total Other Purchased Services	\$816.67			\$1,410.67
600 <u>Supplies</u>				
610 General Supplies	3,578.12	9,036.57		12,614.69
650 Supplies & Fees – Technology Related	1,130.40	3,469.60		45,927.48
Total Supplies	\$4,708.52	\$12,506.17		\$58,542.17
Total 2100 Support Services – Students	\$408,764.77	\$603,416.59	\$162,676.42	\$1,341,697.33

LEA : 103023153 Elizabeth Forward SD

Printed 11/28/2023 11:28:25 AM

General Fund (10)

2120 Guidance Services	Elementary	Secondary	Federal	Total
100 <u>Personnel Services – Salaries</u>				
100 Personnel Services – Salaries	117,989.24	297,538.60	40,843.48	456,371.32
Total Personnel Services – Salaries	\$117,989.24	\$297,538.60	\$40,843.48	\$456,371.32
200 <u>Personnel Services – Employee Benefits</u>				
210 Group Insurance – Contracted Provider	32,137.57	82,655.35	4,825.66	119,618.58
220 Social Security Contributions	8,899.52	22,452.84	3,077.84	34,430.20
230 PSERS Retirement Contributions	41,603.13	104,912.24	13,578.75	160,094.12
260 Workers' Compensation	507.26	1,279.22	175.68	1,962.16
Total Personnel Services – Employee Benefits	\$83,147.48	\$211,299.65	\$21,657.93	\$316,105.06
600 <u>Supplies</u>				
610 General Supplies	451.64	6,585.61		7,037.25
650 Supplies & Fees – Technology Related	1,130.40	3,469.60		4,600.00
Total Supplies	\$1,582.04	\$10,055.21		\$11,637.25
Total 2120 Guidance Services	\$202,718.76	\$518,893.46	\$62,501.41	\$784,113.63

LEA : 103023153 Elizabeth Forward SD

Printed 11/28/2023 11:28:25 AM

General Fund (10)				
2140 Psychological Services	<u>Elementary</u>	<u>Secondary</u>	<u>Federal</u>	<u>Total</u>
100 <u>Personnel Services – Salaries</u>				
100 Personnel Services – Salaries	119,627.06	52,090.15	40,767.21	212,484.42
Total Personnel Services – Salaries	\$119,627.06	\$52,090.15	\$40,767.21	\$212,484.42
200 <u>Personnel Services – Employee Benefits</u>				
210 Group Insurance – Contracted Provider	34,566.83	9,465.24	17,048.40	61,080.47
220 Social Security Contributions	8,995.92	3,931.60	3,059.60	15,987.12
230 PSERS Retirement Contributions	37,365.07	15,388.54	14,374.59	67,128.20
260 Workers' Compensation	514.36	224.01	175.21	913.58
Total Personnel Services – Employee Benefits	\$81,442.18	\$29,009.39	\$34,657.80	\$145,109.37
300 <u>Purchased Professional and Technical Services</u>				
330 Other Professional Services	1,033.62	972.63		2,006.25
Total Purchased Professional and Technical Services	\$1,033.62	\$972.63		\$2,006.25
500 <u>Other Purchased Services</u>				
580 Travel	816.67			816.67
Total Other Purchased Services	\$816.67			\$816.67
600 <u>Supplies</u>				
610 General Supplies	3,126.48	2,450.96		5,577.44
Total Supplies	\$3,126.48	\$2,450.96		\$5,577.44
Total 2140 Psychological Services	\$206,046.01	\$84,523.13	\$75,425.01	\$365,994.15

LEA : 103023153 Elizabeth Forward SD

Printed 11/28/2023 11:28:25 AM

General Fund (10)

2160 Social Work Services	<u>Elementary</u>	<u>Secondary</u>	<u>Federal</u>	<u>Total</u>
300 <u>Purchased Professional and Technical Services</u>				
330 Other Professional Services			24,750.00	60,583.34
Total Purchased Professional and Technical Services			\$24,750.00	\$60,583.34
600 <u>Supplies</u>				
650 Supplies & Fees – Technology Related				3,450.00
Total Supplies				\$3,450.00
Total 2160 Social Work Services			\$24,750.00	\$64,033.34

LEA : 103023153 Elizabeth Forward SD

Printed 11/28/2023 11:28:25 AM

General Fund (10)

2170 Student Accounting Services	<u>Elementary</u>	<u>Secondary</u>	<u>Federal</u>	<u>Total</u>
100 <u>Personnel Services – Salaries</u>				
100 Personnel Services – Salaries				48,278.45
Total Personnel Services – Salaries				\$48,278.45
200 <u>Personnel Services – Employee Benefits</u>				
210 Group Insurance – Contracted Provider				20,460.60
220 Social Security Contributions				3,430.40
230 PSERS Retirement Contributions				16,707.65
260 Workers' Compensation				207.63
Total Personnel Services – Employee Benefits				\$40,806.28
500 <u>Other Purchased Services</u>				
580 Travel				594.00
Total Other Purchased Services				\$594.00
600 <u>Supplies</u>				
650 Supplies & Fees – Technology Related				37,877.48
Total Supplies				\$37,877.48
Total 2170 Student Accounting Services				\$127,556.21

LEA : 103023153 Elizabeth Forward SD

Printed 11/28/2023 11:28:25 AM

General Fund (10)

2200 Support Services – Instructional Staff	Elementary	Secondary	Federal	Total
100 <u>Personnel Services – Salaries</u>				
100 Personnel Services – Salaries	536,096.56	474,022.54		1,010,119.10
Total Personnel Services – Salaries	\$536,096.56	\$474,022.54		\$1,010,119.10
200 <u>Personnel Services – Employee Benefits</u>				
210 Group Insurance – Contracted Provider	50,535.95	71,132.64		121,668.59
220 Social Security Contributions	40,921.98	36,165.03		77,087.01
230 PSERS Retirement Contributions	163,412.24	159,530.47		322,942.71
240 Tuition Reimbursement	850.50	483.00		1,333.50
260 Workers' Compensation	2,332.96	2,064.76		4,397.72
299 All Other Employee Benefits	6,515.34	6,130.89		12,646.23
Total Personnel Services – Employee Benefits	\$264,568.97	\$275,506.79		\$540,075.76
300 <u>Purchased Professional and Technical Services</u>				
322 Professional Educational Services – Ius	5,589.92	5,260.08		10,850.00
360 Employee Training and Development Services	32,439.87	28,450.82	8,000.00	68,890.69
Total Purchased Professional and Technical Services	\$38,029.79	\$33,710.90	\$8,000.00	\$79,740.69
400 <u>Purchased Property Services</u>				
430 Repairs and Maintenance Services	2,477.08	2,330.92	49,400.00	54,208.00
Total Purchased Property Services	\$2,477.08	\$2,330.92	\$49,400.00	\$54,208.00
500 <u>Other Purchased Services</u>				
530 Communications	39,204.73	36,891.41		76,096.14
580 Travel	52,696.58	6,911.00		59,607.58
Total Other Purchased Services	\$91,901.31	\$43,802.41		\$135,703.72
600 <u>Supplies</u>				
610 General Supplies	9,695.66	5,727.83		15,423.49
630 Food	633.25	719.60		1,352.85
640 Books and Periodicals	13,410.10	9,330.86		22,740.96
650 Supplies & Fees – Technology Related	29,126.58	18,541.35		47,667.93
Total Supplies	\$52,865.59	\$34,319.64		\$87,185.23
700 <u>Property</u>				
752 Capital Equipment – Original and Additional	6,306.33	13,777.52		20,083.85
756 Capitalized Technology Equipment – Original	34,554.19	32,515.28		67,069.47
Total Property	\$40,860.52	\$46,292.80		\$87,153.32
800 <u>Other Objects</u>				
810 Dues and Fees	896.78	843.84		1,740.62
Total Other Objects	\$896.78	\$843.84		\$1,740.62
Total 2200 Support Services – Instructional Staff	\$1,027,696.60	\$910,829.84	\$57,400.00	\$1,995,926.44

LEA : 103023153 Elizabeth Forward SD

Printed 11/28/2023 11:28:25 AM

General Fund (10)

2240 Computer-Assisted Instruction Support Services	Elementary	Secondary	Federal	Total
100 Personnel Services – Salaries				
100 Personnel Services – Salaries	173,535.72	163,296.03		336,831.75
Total Personnel Services – Salaries	\$173,535.72	\$163,296.03		\$336,831.75
200 Personnel Services – Employee Benefits				
210 Group Insurance – Contracted Provider	15,991.07	15,047.51		31,038.58
220 Social Security Contributions	13,675.58	12,868.62		26,544.20
230 PSERS Retirement Contributions	57,794.38	54,384.15		112,178.53
260 Workers' Compensation	774.26	728.58		1,502.84
299 All Other Employee Benefits	6,515.34	6,130.89		12,646.23
Total Personnel Services – Employee Benefits	\$94,750.63	\$89,159.75		\$183,910.38
400 Purchased Property Services				
430 Repairs and Maintenance Services	2,477.08	2,330.92	49,400.00	54,208.00
Total Purchased Property Services	\$2,477.08	\$2,330.92	\$49,400.00	\$54,208.00
500 Other Purchased Services				
530 Communications	39,204.73	36,891.41		76,096.14
580 Travel	609.42	573.47		1,182.89
Total Other Purchased Services	\$39,814.15	\$37,464.88		\$77,279.03
600 Supplies				
610 General Supplies	711.55	669.57		1,381.12
630 Food	170.25	160.20		330.45
650 Supplies & Fees – Technology Related	14,068.43	13,238.31		27,306.74
Total Supplies	\$14,950.23	\$14,068.08		\$29,018.31
700 Property				
756 Capitalized Technology Equipment – Original	34,554.19	32,515.28		67,069.47
Total Property	\$34,554.19	\$32,515.28		\$67,069.47
800 Other Objects				
810 Dues and Fees	118.50	111.50		230.00
Total Other Objects	\$118.50	\$111.50		\$230.00
Total 2240 Computer-Assisted Instruction Support Services	\$360,200.50	\$338,946.44	\$49,400.00	\$748,546.94

LEA : 103023153 Elizabeth Forward SD

Printed 11/28/2023 11:28:25 AM

General Fund (10)				
2250 School Library Services	<u>Elementary</u>	<u>Secondary</u>	<u>Federal</u>	<u>Total</u>
100 <u>Personnel Services – Salaries</u>				
100 Personnel Services – Salaries	118,324.54	107,419.95		225,744.49
Total Personnel Services – Salaries	\$118,324.54	\$107,419.95		\$225,744.49
200 <u>Personnel Services – Employee Benefits</u>				
210 Group Insurance – Contracted Provider	10,745.29	33,689.89		44,435.18
220 Social Security Contributions	8,891.20	8,052.46		16,943.66
230 PSERS Retirement Contributions	33,082.52	37,876.38		70,958.90
260 Workers' Compensation	508.86	462.03		970.89
Total Personnel Services – Employee Benefits	\$53,227.87	\$80,080.76		\$133,308.63
600 <u>Supplies</u>				
610 General Supplies	4,188.30	545.43		4,733.73
640 Books and Periodicals	4,302.95	761.08		5,064.03
650 Supplies & Fees – Technology Related	12,404.65	2,649.54		15,054.19
Total Supplies	\$20,895.90	\$3,956.05		\$24,851.95
Total 2250 School Library Services	\$192,448.31	\$191,456.76		\$383,905.07

LEA : 103023153 Elizabeth Forward SD

Printed 11/28/2023 11:28:25 AM

General Fund (10)

2260 Instruction and Curriculum Development Services	<u>Elementary</u>	<u>Secondary</u>	<u>Federal</u>	<u>Total</u>
100 <u>Personnel Services – Salaries</u>				
100 Personnel Services – Salaries	212,384.39	199,852.36		412,236.75
Total Personnel Services – Salaries	\$212,384.39	\$199,852.36		\$412,236.75
200 <u>Personnel Services – Employee Benefits</u>				
210 Group Insurance – Contracted Provider	23,799.59	22,395.24		46,194.83
220 Social Security Contributions	15,921.49	14,982.02		30,903.51
230 PSERS Retirement Contributions	70,193.86	66,051.99		136,245.85
260 Workers' Compensation	913.16	859.27		1,772.43
Total Personnel Services – Employee Benefits	\$110,828.10	\$104,288.52		\$215,116.62
300 <u>Purchased Professional and Technical Services</u>				
322 Professional Educational Services – lus	5,589.92	5,260.08		10,850.00
Total Purchased Professional and Technical Services	\$5,589.92	\$5,260.08		\$10,850.00
500 <u>Other Purchased Services</u>				
580 Travel	1,412.01	1,328.71		2,740.72
Total Other Purchased Services	\$1,412.01	\$1,328.71		\$2,740.72
600 <u>Supplies</u>				
610 General Supplies	4,795.81	4,512.83		9,308.64
630 Food	447.33	420.93		868.26
640 Books and Periodicals	9,107.15	8,569.78		17,676.93
Total Supplies	\$14,350.29	\$13,503.54		\$27,853.83
700 <u>Property</u>				
752 Capital Equipment – Original and Additional	6,306.33	13,777.52		20,083.85
Total Property	\$6,306.33	\$13,777.52		\$20,083.85
800 <u>Other Objects</u>				
810 Dues and Fees	778.28	732.34		1,510.62
Total Other Objects	\$778.28	\$732.34		\$1,510.62
Total 2260 Instruction and Curriculum Development Services	\$351,649.32	\$338,743.07		\$690,392.39

LEA : 103023153 Elizabeth Forward SD

Printed 11/28/2023 11:28:25 AM

General Fund (10)

2270 Instructional Staff Professional Development Services	<u>Elementary</u>	<u>Secondary</u>	<u>Federal</u>	<u>Total</u>
100 <u>Personnel Services – Salaries</u>				
100 Personnel Services – Salaries	3,670.80	3,454.20		7,125.00
Total Personnel Services – Salaries	\$3,670.80	\$3,454.20		\$7,125.00
200 <u>Personnel Services – Employee Benefits</u>				
220 Social Security Contributions	278.36	261.93		540.29
230 PSERS Retirement Contributions	1,294.33	1,217.95		2,512.28
240 Tuition Reimbursement	850.50	483.00		1,333.50
260 Workers' Compensation	15.81	14.88		30.69
Total Personnel Services – Employee Benefits	\$2,439.00	\$1,977.76		\$4,416.76
300 <u>Purchased Professional and Technical Services</u>				
360 Employee Training and Development Services	32,439.87	28,450.82	8,000.00	68,890.69
Total Purchased Professional and Technical Services	\$32,439.87	\$28,450.82	\$8,000.00	\$68,890.69
500 <u>Other Purchased Services</u>				
580 Travel	50,675.15	5,008.82		55,683.97
Total Other Purchased Services	\$50,675.15	\$5,008.82		\$55,683.97
600 <u>Supplies</u>				
630 Food	15.67	138.47		154.14
650 Supplies & Fees – Technology Related	2,653.50	2,653.50		5,307.00
Total Supplies	\$2,669.17	\$2,791.97		\$5,461.14
Total 2270 Instructional Staff Professional Development Services	\$91,893.99	\$41,683.57	\$8,000.00	\$141,577.56

General Fund (10)

2290 Other Instructional Staff Services	<u>Elementary</u>	<u>Secondary</u>	<u>Federal</u>	<u>Total</u>
100 <u>Personnel Services – Salaries</u>				
100 Personnel Services – Salaries	28,181.11			28,181.11
Total Personnel Services – Salaries	\$28,181.11			\$28,181.11
200 <u>Personnel Services – Employee Benefits</u>				
220 Social Security Contributions	2,155.35			2,155.35
230 PSERS Retirement Contributions	1,047.15			1,047.15
260 Workers’ Compensation	120.87			120.87
Total Personnel Services – Employee Benefits	\$3,323.37			\$3,323.37
Total 2290 Other Instructional Staff Services	\$31,504.48			\$31,504.48

LEA : 103023153 Elizabeth Forward SD

Printed 11/28/2023 11:28:25 AM

General Fund (10)				
2300 Support Services – Administration	<u>Elementary</u>	<u>Secondary</u>	<u>Federal</u>	<u>Total</u>
100 <u>Personnel Services – Salaries</u>				
100 Personnel Services – Salaries	600,053.89	597,059.38		1,568,058.62
Total Personnel Services – Salaries	\$600,053.89	\$597,059.38		\$1,568,058.62
200 <u>Personnel Services – Employee Benefits</u>				
210 Group Insurance – Contracted Provider	107,366.30	150,695.11		281,209.57
220 Social Security Contributions	45,651.82	44,865.49		114,567.61
230 PSERS Retirement Contributions	198,465.32	206,735.59		503,240.26
260 Workers' Compensation	2,580.10	2,567.22		6,742.32
299 All Other Employee Benefits				18,065.10
Total Personnel Services – Employee Benefits	\$354,063.54	\$404,863.41		\$923,824.86
300 <u>Purchased Professional and Technical Services</u>				
310 Official / Administrative Services				37,706.49
330 Other Professional Services				272,221.45
Total Purchased Professional and Technical Services				\$309,927.94
500 <u>Other Purchased Services</u>				
520 Insurance – General				37,346.00
530 Communications	3,966.12	12,347.69		16,313.81
549 Other Advertising/Public Relations				1,446.55
580 Travel	899.77	1,679.12		4,708.51
Total Other Purchased Services	\$4,865.89	\$14,026.81		\$59,814.87
600 <u>Supplies</u>				
610 General Supplies				10,446.87
630 Food	1,904.19	17,135.27		35,358.80
640 Books and Periodicals				1,320.00
650 Supplies & Fees – Technology Related				8,924.34
Total Supplies	\$1,904.19	\$17,135.27		\$56,050.01
800 <u>Other Objects</u>				
810 Dues and Fees	1,815.00	1,805.00		26,596.38
Total Other Objects	\$1,815.00	\$1,805.00		\$26,596.38
Total 2300 Support Services – Administration	\$962,702.51	\$1,034,889.87		\$2,944,272.68

LEA : 103023153 Elizabeth Forward SD

Printed 11/28/2023 11:28:25 AM

General Fund (10)				
2310 Board Services	<u>Elementary</u>	<u>Secondary</u>	<u>Federal</u>	<u>Total</u>
300 <u>Purchased Professional and Technical Services</u>				
330 Other Professional Services				20,407.51
Total Purchased Professional and Technical Services				\$20,407.51
500 <u>Other Purchased Services</u>				
520 Insurance – General				36,010.00
549 Other Advertising/Public Relations				1,446.55
Total Other Purchased Services				\$37,456.55
600 <u>Supplies</u>				
630 Food				921.42
640 Books and Periodicals				1,320.00
650 Supplies & Fees – Technology Related				8,924.34
Total Supplies				\$11,165.76
800 <u>Other Objects</u>				
810 Dues and Fees				15,955.80
Total Other Objects				\$15,955.80
Total 2310 Board Services				\$84,985.62

LEA : 103023153 Elizabeth Forward SD

Printed 11/28/2023 11:28:25 AM

General Fund (10)

2330 Tax Assessment and Collection Services	<u>Elementary</u>	<u>Secondary</u>	<u>Federal</u>	<u>Total</u>
300 <u>Purchased Professional and Technical Services</u>				
310 Official / Administrative Services				37,706.49
330 Other Professional Services				176,610.04
Total Purchased Professional and Technical Services				\$214,316.53
500 <u>Other Purchased Services</u>				
520 Insurance – General				1,336.00
Total Other Purchased Services				\$1,336.00
Total 2330 Tax Assessment and Collection Services				\$215,652.53

LEA : 103023153 Elizabeth Forward SD

Printed 11/28/2023 11:28:25 AM

General Fund (10)				
2350 Legal and Accounting Services	<u>Elementary</u>	<u>Secondary</u>	<u>Federal</u>	<u>Total</u>
300 <u>Purchased Professional and Technical Services</u>				
330 Other Professional Services				75,203.90
Total Purchased Professional and Technical Services				\$75,203.90
Total 2350 Legal and Accounting Services				\$75,203.90

General Fund (10)

2360 Office of the Superintendent / Executive Director Services	<u>Elementary</u>	<u>Secondary</u>	<u>Federal</u>	<u>Total</u>
100 <u>Personnel Services – Salaries</u>				
100 Personnel Services – Salaries				370,945.35
Total Personnel Services – Salaries				\$370,945.35
200 <u>Personnel Services – Employee Benefits</u>				
210 Group Insurance – Contracted Provider				23,148.16
220 Social Security Contributions				24,050.30
230 PSERS Retirement Contributions				98,039.35
260 Workers' Compensation				1,595.00
299 All Other Employee Benefits				18,065.10
Total Personnel Services – Employee Benefits				\$164,897.91
500 <u>Other Purchased Services</u>				
580 Travel				2,129.62
Total Other Purchased Services				\$2,129.62
600 <u>Supplies</u>				
610 General Supplies				9,099.92
630 Food				11,801.63
Total Supplies				\$20,901.55
800 <u>Other Objects</u>				
810 Dues and Fees				7,020.58
Total Other Objects				\$7,020.58
Total 2360 Office of the Superintendent / Executive Director Services				\$565,895.01

LEA : 103023153 Elizabeth Forward SD

Printed 11/28/2023 11:28:25 AM

General Fund (10)				
2370 Community Relations Services	<u>Elementary</u>	<u>Secondary</u>	<u>Federal</u>	<u>Total</u>
600 <u>Supplies</u>				
610 General Supplies				1,346.95
630 Food				3,596.29
Total Supplies				\$4,943.24
Total 2370 Community Relations Services				\$4,943.24

LEA : 103023153 Elizabeth Forward SD

Printed 11/28/2023 11:28:25 AM

General Fund (10)				
2380 Office of the Principal Services	<u>Elementary</u>	<u>Secondary</u>	<u>Federal</u>	<u>Total</u>
100 <u>Personnel Services – Salaries</u>				
100 Personnel Services – Salaries	600,053.89	597,059.38		1,197,113.27
Total Personnel Services – Salaries	\$600,053.89	\$597,059.38		\$1,197,113.27
200 <u>Personnel Services – Employee Benefits</u>				
210 Group Insurance – Contracted Provider	107,366.30	150,695.11		258,061.41
220 Social Security Contributions	45,651.82	44,865.49		90,517.31
230 PSERS Retirement Contributions	198,465.32	206,735.59		405,200.91
260 Workers' Compensation	2,580.10	2,567.22		5,147.32
Total Personnel Services – Employee Benefits	\$354,063.54	\$404,863.41		\$758,926.95
500 <u>Other Purchased Services</u>				
530 Communications	3,966.12	12,347.69		16,313.81
580 Travel	899.77	1,679.12		2,578.89
Total Other Purchased Services	\$4,865.89	\$14,026.81		\$18,892.70
600 <u>Supplies</u>				
630 Food	1,904.19	17,135.27		19,039.46
Total Supplies	\$1,904.19	\$17,135.27		\$19,039.46
800 <u>Other Objects</u>				
810 Dues and Fees	1,815.00	1,805.00		3,620.00
Total Other Objects	\$1,815.00	\$1,805.00		\$3,620.00
Total 2380 Office of the Principal Services	\$962,702.51	\$1,034,889.87		\$1,997,592.38

LEA : 103023153 Elizabeth Forward SD

Printed 11/28/2023 11:28:25 AM

General Fund (10)				
2400 Support Services – Pupil Health	<u>Elementary</u>	<u>Secondary</u>	<u>Federal</u>	<u>Total</u>
100 <u>Personnel Services – Salaries</u>				
100 Personnel Services – Salaries				325,994.22
Total Personnel Services – Salaries				\$325,994.22
200 <u>Personnel Services – Employee Benefits</u>				
210 Group Insurance – Contracted Provider				49,088.76
220 Social Security Contributions				24,631.67
230 PSERS Retirement Contributions				107,100.21
260 Workers' Compensation				1,401.73
Total Personnel Services – Employee Benefits				\$182,222.37
300 <u>Purchased Professional and Technical Services</u>				
330 Other Professional Services				66,553.79
Total Purchased Professional and Technical Services				\$66,553.79
500 <u>Other Purchased Services</u>				
580 Travel				18.75
Total Other Purchased Services				\$18.75
600 <u>Supplies</u>				
610 General Supplies				6,691.36
Total Supplies				\$6,691.36
Total 2400 Support Services – Pupil Health				\$581,480.49

LEA : 103023153 Elizabeth Forward SD

Printed 11/28/2023 11:28:25 AM

General Fund (10)				
2420 Medical Services	<u>Elementary</u>	<u>Secondary</u>	<u>Federal</u>	<u>Total</u>
300 <u>Purchased Professional and Technical Services</u>				
330 Other Professional Services				11,879.79
Total Purchased Professional and Technical Services				\$11,879.79
Total 2420 Medical Services				\$11,879.79

LEA : 103023153 Elizabeth Forward SD

Printed 11/28/2023 11:28:25 AM

General Fund (10)

2430 Dental Services

<u>Elementary</u>	<u>Secondary</u>	<u>Federal</u>	<u>Total</u>
-------------------	------------------	----------------	--------------

300 Purchased Professional and Technical Services

330 Other Professional Services			699.00
---------------------------------	--	--	--------

Total Purchased Professional and Technical Services			\$699.00
--	--	--	-----------------

Total 2430 Dental Services			\$699.00
-----------------------------------	--	--	-----------------

LEA : 103023153 Elizabeth Forward SD

Printed 11/28/2023 11:28:25 AM

General Fund (10)

2440 Nursing Services

	<u>Elementary</u>	<u>Secondary</u>	<u>Federal</u>	<u>Total</u>
100 <u>Personnel Services – Salaries</u>				
100 Personnel Services – Salaries				325,994.22
Total Personnel Services – Salaries				\$325,994.22
200 <u>Personnel Services – Employee Benefits</u>				
210 Group Insurance – Contracted Provider				49,088.76
220 Social Security Contributions				24,631.67
230 PSERS Retirement Contributions				107,100.21
260 Workers' Compensation				1,401.73
Total Personnel Services – Employee Benefits				\$182,222.37
300 <u>Purchased Professional and Technical Services</u>				
330 Other Professional Services				53,975.00
Total Purchased Professional and Technical Services				\$53,975.00
500 <u>Other Purchased Services</u>				
580 Travel				18.75
Total Other Purchased Services				\$18.75
600 <u>Supplies</u>				
610 General Supplies				4,961.61
Total Supplies				\$4,961.61
Total 2440 Nursing Services				\$567,171.95

LEA : 103023153 Elizabeth Forward SD

Printed 11/28/2023 11:28:25 AM

General Fund (10)				
2490 Other Health Services	<u>Elementary</u>	<u>Secondary</u>	<u>Federal</u>	<u>Total</u>
600 <u>Supplies</u>				
610 General Supplies				1,729.75
Total Supplies				\$1,729.75
Total 2490 Other Health Services				\$1,729.75

LEA : 103023153 Elizabeth Forward SD

Printed 11/28/2023 11:28:25 AM

General Fund (10)					
2500 Support Services – Business		<u>Elementary</u>	<u>Secondary</u>	<u>Federal</u>	<u>Total</u>
100 <u>Personnel Services – Salaries</u>					
100 Personnel Services – Salaries					325,817.42
Total Personnel Services – Salaries					\$325,817.42
200 <u>Personnel Services – Employee Benefits</u>					
210 Group Insurance – Contracted Provider					85,287.60
220 Social Security Contributions					24,579.87
230 PSERS Retirement Contributions					110,756.92
260 Workers' Compensation					1,400.96
Total Personnel Services – Employee Benefits					\$222,025.35
500 <u>Other Purchased Services</u>					
530 Communications					6,000.00
580 Travel					746.50
Total Other Purchased Services					\$6,746.50
600 <u>Supplies</u>					
610 General Supplies					3,848.41
650 Supplies & Fees – Technology Related					29,592.70
Total Supplies					\$33,441.11
800 <u>Other Objects</u>					
810 Dues and Fees					28,598.95
Total Other Objects					\$28,598.95
Total 2500 Support Services – Business					\$616,629.33

LEA : 103023153 Elizabeth Forward SD

Printed 11/28/2023 11:28:25 AM

General Fund (10)				
2510 Fiscal Services	<u>Elementary</u>	<u>Secondary</u>	<u>Federal</u>	<u>Total</u>
100 <u>Personnel Services – Salaries</u>				
100 Personnel Services – Salaries				325,817.42
Total Personnel Services – Salaries				\$325,817.42
200 <u>Personnel Services – Employee Benefits</u>				
210 Group Insurance – Contracted Provider				85,287.60
220 Social Security Contributions				24,579.87
230 PSERS Retirement Contributions				110,756.92
260 Workers' Compensation				1,400.96
Total Personnel Services – Employee Benefits				\$222,025.35
500 <u>Other Purchased Services</u>				
530 Communications				6,000.00
580 Travel				746.50
Total Other Purchased Services				\$6,746.50
600 <u>Supplies</u>				
610 General Supplies				3,848.41
650 Supplies & Fees – Technology Related				29,592.70
Total Supplies				\$33,441.11
800 <u>Other Objects</u>				
810 Dues and Fees				28,598.95
Total Other Objects				\$28,598.95
Total 2510 Fiscal Services				\$616,629.33

LEA : 103023153 Elizabeth Forward SD

Printed 11/28/2023 11:28:25 AM

General Fund (10)				
2511 Supervision of Fiscal Services - Head of Component	<u>Elementary</u>	<u>Secondary</u>	<u>Federal</u>	<u>Total</u>
100 <u>Personnel Services – Salaries</u>				
100 Personnel Services – Salaries				152,981.48
Total Personnel Services – Salaries				\$152,981.48
200 <u>Personnel Services – Employee Benefits</u>				
210 Group Insurance – Contracted Provider				24,529.20
220 Social Security Contributions				11,493.30
230 PSERS Retirement Contributions				51,561.64
260 Workers' Compensation				657.70
Total Personnel Services – Employee Benefits				\$88,241.84
500 <u>Other Purchased Services</u>				
530 Communications				6,000.00
580 Travel				746.50
Total Other Purchased Services				\$6,746.50
600 <u>Supplies</u>				
610 General Supplies				3,848.41
650 Supplies & Fees – Technology Related				29,592.70
Total Supplies				\$33,441.11
800 <u>Other Objects</u>				
810 Dues and Fees				2,851.72
Total Other Objects				\$2,851.72
Total 2511 Supervision of Fiscal Services - Head of Component				\$284,262.65

LEA : 103023153 Elizabeth Forward SD

Printed 11/28/2023 11:28:25 AM

General Fund (10)

2513 Receiving and Disbursing Funds Services	<u>Elementary</u>	<u>Secondary</u>	<u>Federal</u>	<u>Total</u>
100 <u>Personnel Services – Salaries</u>				
100 Personnel Services – Salaries				49,153.19
Total Personnel Services – Salaries				\$49,153.19
200 <u>Personnel Services – Employee Benefits</u>				
210 Group Insurance – Contracted Provider				15,123.12
220 Social Security Contributions				3,726.51
230 PSERS Retirement Contributions				16,399.04
260 Workers' Compensation				211.36
Total Personnel Services – Employee Benefits				\$35,460.03
Total 2513 Receiving and Disbursing Funds Services				\$84,613.22

LEA : 103023153 Elizabeth Forward SD

Printed 11/28/2023 11:28:25 AM

General Fund (10)

2514 Payroll Services

Elementary Secondary Federal Total

100 <u>Personnel Services – Salaries</u>				
100 Personnel Services – Salaries				65,453.38
Total Personnel Services – Salaries				\$65,453.38
200 <u>Personnel Services – Employee Benefits</u>				
210 Group Insurance – Contracted Provider				23,233.32
220 Social Security Contributions				4,954.87
230 PSERS Retirement Contributions				22,652.00
260 Workers' Compensation				281.48
Total Personnel Services – Employee Benefits				\$51,121.67
Total 2514 Payroll Services				\$116,575.05

General Fund (10)

2515 Financial Accounting Services	<u>Elementary</u>	<u>Secondary</u>	<u>Federal</u>	<u>Total</u>
100 <u>Personnel Services – Salaries</u>				
100 Personnel Services – Salaries				58,229.37
Total Personnel Services – Salaries				\$58,229.37
200 <u>Personnel Services – Employee Benefits</u>				
210 Group Insurance – Contracted Provider				22,401.96
220 Social Security Contributions				4,405.19
230 PSERS Retirement Contributions				20,144.24
260 Workers' Compensation				250.42
Total Personnel Services – Employee Benefits				\$47,201.81
Total 2515 Financial Accounting Services				\$105,431.18

LEA : 103023153 Elizabeth Forward SD

Printed 11/28/2023 11:28:25 AM

General Fund (10)

2519 Other Fiscal Services	<u>Elementary</u>	<u>Secondary</u>	<u>Federal</u>	<u>Total</u>
800 <u>Other Objects</u>				
810 Dues and Fees				25,747.23
Total Other Objects				\$25,747.23
Total 2519 Other Fiscal Services				\$25,747.23

LEA : 103023153 Elizabeth Forward SD

Printed 11/28/2023 11:28:25 AM

General Fund (10)				
2600 Operation and Maintenance of Plant Services	<u>Elementary</u>	<u>Secondary</u>	<u>Federal</u>	<u>Total</u>
100 <u>Personnel Services – Salaries</u>				
100 Personnel Services – Salaries				1,751,132.15
Total Personnel Services – Salaries				\$1,751,132.15
200 <u>Personnel Services – Employee Benefits</u>				
210 Group Insurance – Contracted Provider				462,681.34
220 Social Security Contributions				131,927.33
230 PSERS Retirement Contributions				609,003.59
250 Unemployment Compensation				6,216.32
260 Workers' Compensation				7,529.44
Total Personnel Services – Employee Benefits				\$1,217,358.02
300 <u>Purchased Professional and Technical Services</u>				
310 Official / Administrative Services				252.83
350 Security / Safety Services				63,284.27
Total Purchased Professional and Technical Services				\$63,537.10
400 <u>Purchased Property Services</u>				
410 Cleaning Services				43,004.99
420 Utility Services				188,995.58
430 Repairs and Maintenance Services				366,296.84
440 Rentals				4,811.16
460 Extermination Services				16,175.60
Total Purchased Property Services				\$619,284.17
500 <u>Other Purchased Services</u>				
523 General Property and Liability Insurance				160,242.00
530 Communications				41,153.61
580 Travel				10,851.46
Total Other Purchased Services				\$212,247.07
600 <u>Supplies</u>				
610 General Supplies	226,547.07	249,351.82		475,898.89
620 Energy				580,276.74
650 Supplies & Fees – Technology Related				3,750.00
Total Supplies	\$226,547.07	\$249,351.82		\$1,059,925.63
700 <u>Property</u>				
752 Capital Equipment – Original and Additional				8,516.77
756 Capitalized Technology Equipment – Original				4,542.27
Total Property				\$13,059.04
800 <u>Other Objects</u>				
810 Dues and Fees				1,287.62
Total Other Objects				\$1,287.62
Total 2600 Operation and Maintenance of Plant Services	\$226,547.07	\$249,351.82		\$4,937,830.80

LEA : 103023153 Elizabeth Forward SD

Printed 11/28/2023 11:28:25 AM

General Fund (10)

2610 Supervision of Operation and Maintenance of Plant Services	<u>Elementary</u>	<u>Secondary</u>	<u>Federal</u>	<u>Total</u>
100 <u>Personnel Services – Salaries</u>				
100 Personnel Services – Salaries				95,299.79
Total Personnel Services – Salaries				\$95,299.79
200 <u>Personnel Services – Employee Benefits</u>				
210 Group Insurance – Contracted Provider				21,909.60
220 Social Security Contributions				7,054.15
230 PSERS Retirement Contributions				32,721.78
260 Workers' Compensation				409.84
Total Personnel Services – Employee Benefits				\$62,095.37
500 <u>Other Purchased Services</u>				
580 Travel				5,238.65
Total Other Purchased Services				\$5,238.65
800 <u>Other Objects</u>				
810 Dues and Fees				214.95
Total Other Objects				\$214.95
Total 2610 Supervision of Operation and Maintenance of Plant Services				\$162,848.76

LEA : 103023153 Elizabeth Forward SD

Printed 11/28/2023 11:28:25 AM

General Fund (10)

2611 Supervision of Operation and Maintenance of Plant Services – Head of Component	<u>Elementary</u>	<u>Secondary</u>	<u>Federal</u>	<u>Total</u>
100 <u>Personnel Services – Salaries</u>				
100 Personnel Services – Salaries				95,299.79
Total Personnel Services – Salaries				\$95,299.79
200 <u>Personnel Services – Employee Benefits</u>				
210 Group Insurance – Contracted Provider				21,909.60
220 Social Security Contributions				7,054.15
230 PSERS Retirement Contributions				32,721.78
260 Workers' Compensation				409.84
Total Personnel Services – Employee Benefits				\$62,095.37
500 <u>Other Purchased Services</u>				
580 Travel				5,238.65
Total Other Purchased Services				\$5,238.65
800 <u>Other Objects</u>				
810 Dues and Fees				214.95
Total Other Objects				\$214.95
Total 2611 Supervision of Operation and Maintenance of Plant Services – Head of Component				\$162,848.76

LEA : 103023153 Elizabeth Forward SD

Printed 11/28/2023 11:28:25 AM

General Fund (10)

2620 Operation of Buildings Services	Elementary	Secondary	Federal	Total
100 <u>Personnel Services – Salaries</u>				
100 Personnel Services – Salaries				1,430,655.91
Total Personnel Services – Salaries				\$1,430,655.91
200 <u>Personnel Services – Employee Benefits</u>				
210 Group Insurance – Contracted Provider				440,771.74
220 Social Security Contributions				107,647.26
230 PSERS Retirement Contributions				496,884.62
250 Unemployment Compensation				6,216.32
260 Workers' Compensation				6,151.41
Total Personnel Services – Employee Benefits				\$1,057,671.35
400 <u>Purchased Property Services</u>				
410 Cleaning Services				19,273.63
420 Utility Services				188,995.58
430 Repairs and Maintenance Services				366,296.84
440 Rentals				4,811.16
460 Extermination Services				16,175.60
Total Purchased Property Services				\$595,552.81
500 <u>Other Purchased Services</u>				
523 General Property and Liability Insurance				160,242.00
530 Communications				41,153.61
580 Travel				5,612.81
Total Other Purchased Services				\$207,008.42
600 <u>Supplies</u>				
610 General Supplies	223,129.36	246,849.66		469,979.02
620 Energy				580,276.74
Total Supplies	\$223,129.36	\$246,849.66		\$1,050,255.76
700 <u>Property</u>				
752 Capital Equipment – Original and Additional				8,516.77
756 Capitalized Technology Equipment – Original				4,542.27
Total Property				\$13,059.04
800 <u>Other Objects</u>				
810 Dues and Fees				1,072.67
Total Other Objects				\$1,072.67
Total 2620 Operation of Buildings Services	\$223,129.36	\$246,849.66		\$4,355,275.96

LEA : 103023153 Elizabeth Forward SD

Printed 11/28/2023 11:28:25 AM

General Fund (10)

2630 Care and Upkeep of Grounds Services	<u>Elementary</u>	<u>Secondary</u>	<u>Federal</u>	<u>Total</u>
400 <u>Purchased Property Services</u>				
410 Cleaning Services				23,731.36
Total Purchased Property Services				\$23,731.36
Total 2630 Care and Upkeep of Grounds Services				\$23,731.36

LEA : 103023153 Elizabeth Forward SD

Printed 11/28/2023 11:28:25 AM

General Fund (10)

2660 Safety and Security Services	<u>Elementary</u>	<u>Secondary</u>	<u>Federal</u>	<u>Total</u>
100 <u>Personnel Services – Salaries</u>				
100 Personnel Services – Salaries				225,176.45
Total Personnel Services – Salaries				\$225,176.45
200 <u>Personnel Services – Employee Benefits</u>				
220 Social Security Contributions				17,225.92
230 PSERS Retirement Contributions				79,397.19
260 Workers’ Compensation				968.19
Total Personnel Services – Employee Benefits				\$97,591.30
300 <u>Purchased Professional and Technical Services</u>				
310 Official / Administrative Services				252.83
350 Security / Safety Services				63,284.27
Total Purchased Professional and Technical Services				\$63,537.10
600 <u>Supplies</u>				
610 General Supplies	3,417.71	2,502.16		5,919.87
650 Supplies & Fees – Technology Related				3,750.00
Total Supplies	\$3,417.71	\$2,502.16		\$9,669.87
Total 2660 Safety and Security Services	\$3,417.71	\$2,502.16		\$395,974.72

LEA : 103023153 Elizabeth Forward SD

Printed 11/28/2023 11:28:25 AM

General Fund (10)

2700 Student Transportation Services	<u>Elementary</u>	<u>Secondary</u>	<u>Federal</u>	<u>Total</u>
500 <u>Other Purchased Services</u>				
511 Student Transportation Services from Another LEA Within the State				71,562.02
513 Contracted Carriers				2,723,545.85
516 Student Transportation Services From the IU				48.51
Total Other Purchased Services				\$2,795,156.38
Total 2700 Student Transportation Services				\$2,795,156.38

LEA : 103023153 Elizabeth Forward SD

Printed 11/28/2023 11:28:25 AM

General Fund (10)

2720 Vehicle Operation Services

Elementary Secondary Federal Total

500 Other Purchased Services

511	Student Transportation Services from Another LEA Within the State				71,562.02
513	Contracted Carriers				2,575,222.08
516	Student Transportation Services From the IU				48.51

Total Other Purchased Services					\$2,646,832.61
Total 2720 Vehicle Operation Services					\$2,646,832.61

LEA : 103023153 Elizabeth Forward SD

Printed 11/28/2023 11:28:25 AM

General Fund (10)				
2750 Nonpublic Transportation	<u>Elementary</u>	<u>Secondary</u>	<u>Federal</u>	<u>Total</u>
500 <u>Other Purchased Services</u>				
513 Contracted Carriers				148,323.77
Total Other Purchased Services				\$148,323.77
Total 2750 Nonpublic Transportation				\$148,323.77

LEA : 103023153 Elizabeth Forward SD

Printed 11/28/2023 11:28:25 AM

General Fund (10)				
2800 Support Services – Central	<u>Elementary</u>	<u>Secondary</u>	<u>Federal</u>	<u>Total</u>
100 <u>Personnel Services – Salaries</u>				
100 Personnel Services – Salaries				184,542.12
Total Personnel Services – Salaries				\$184,542.12
200 <u>Personnel Services – Employee Benefits</u>				
210 Group Insurance – Contracted Provider				24,013.32
220 Social Security Contributions				13,839.41
230 PSERS Retirement Contributions				61,390.11
240 Tuition Reimbursement				1,701.00
260 Workers' Compensation				793.41
Total Personnel Services – Employee Benefits				\$101,737.25
300 <u>Purchased Professional and Technical Services</u>				
330 Other Professional Services				4,462.59
360 Employee Training and Development Services				5,781.36
Total Purchased Professional and Technical Services				\$10,243.95
500 <u>Other Purchased Services</u>				
549 Other Advertising/Public Relations				19,433.62
550 Printing and Binding				29,469.96
580 Travel				23,861.66
Total Other Purchased Services				\$72,765.24
600 <u>Supplies</u>				
610 General Supplies				2,051.10
650 Supplies & Fees – Technology Related				12,469.12
Total Supplies				\$14,520.22
800 <u>Other Objects</u>				
810 Dues and Fees				2,565.91
Total Other Objects				\$2,565.91
Total 2800 Support Services – Central				\$386,374.69

LEA : 103023153 Elizabeth Forward SD

Printed 11/28/2023 11:28:25 AM

General Fund (10)

2820 Information Services	<u>Elementary</u>	<u>Secondary</u>	<u>Federal</u>	<u>Total</u>
300 <u>Purchased Professional and Technical Services</u>				
330 Other Professional Services				1,240.99
Total Purchased Professional and Technical Services				\$1,240.99
500 <u>Other Purchased Services</u>				
550 Printing and Binding				29,469.96
Total Other Purchased Services				\$29,469.96
Total 2820 Information Services				\$30,710.95

LEA : 103023153 Elizabeth Forward SD

Printed 11/28/2023 11:28:25 AM

General Fund (10)

2823 Public Information Services	<u>Elementary</u>	<u>Secondary</u>	<u>Federal</u>	<u>Total</u>
300 <u>Purchased Professional and Technical Services</u>				
330 Other Professional Services				1,240.99
Total Purchased Professional and Technical Services				\$1,240.99
500 <u>Other Purchased Services</u>				
550 Printing and Binding				29,469.96
Total Other Purchased Services				\$29,469.96
Total 2823 Public Information Services				\$30,710.95

LEA : 103023153 Elizabeth Forward SD

Printed 11/28/2023 11:28:25 AM

General Fund (10)

2830 Staff Services

	<u>Elementary</u>	<u>Secondary</u>	<u>Federal</u>	<u>Total</u>
100 <u>Personnel Services – Salaries</u>				
100 Personnel Services – Salaries				184,542.12
Total Personnel Services – Salaries				\$184,542.12
200 <u>Personnel Services – Employee Benefits</u>				
210 Group Insurance – Contracted Provider				24,013.32
220 Social Security Contributions				13,839.41
230 PSERS Retirement Contributions				61,390.11
240 Tuition Reimbursement				1,701.00
260 Workers' Compensation				793.41
Total Personnel Services – Employee Benefits				\$101,737.25
300 <u>Purchased Professional and Technical Services</u>				
330 Other Professional Services				3,221.60
360 Employee Training and Development Services				5,781.36
Total Purchased Professional and Technical Services				\$9,002.96
500 <u>Other Purchased Services</u>				
549 Other Advertising/Public Relations				19,433.62
580 Travel				23,861.66
Total Other Purchased Services				\$43,295.28
600 <u>Supplies</u>				
610 General Supplies				2,051.10
650 Supplies & Fees – Technology Related				12,469.12
Total Supplies				\$14,520.22
800 <u>Other Objects</u>				
810 Dues and Fees				2,565.91
Total Other Objects				\$2,565.91
Total 2830 Staff Services				\$355,663.74

LEA : 103023153 Elizabeth Forward SD

Printed 11/28/2023 11:28:25 AM

General Fund (10)				
2832 Recruitment and Placement Services	<u>Elementary</u>	<u>Secondary</u>	<u>Federal</u>	<u>Total</u>
100 <u>Personnel Services – Salaries</u>				
100 Personnel Services – Salaries				184,542.12
Total Personnel Services – Salaries				\$184,542.12
200 <u>Personnel Services – Employee Benefits</u>				
210 Group Insurance – Contracted Provider				24,013.32
220 Social Security Contributions				13,839.41
230 PSERS Retirement Contributions				61,390.11
260 Workers' Compensation				793.41
Total Personnel Services – Employee Benefits				\$100,036.25
500 <u>Other Purchased Services</u>				
549 Other Advertising/Public Relations				19,433.62
580 Travel				153.25
Total Other Purchased Services				\$19,586.87
600 <u>Supplies</u>				
610 General Supplies				2,051.10
650 Supplies & Fees – Technology Related				12,469.12
Total Supplies				\$14,520.22
800 <u>Other Objects</u>				
810 Dues and Fees				2,565.91
Total Other Objects				\$2,565.91
Total 2832 Recruitment and Placement Services				\$321,251.37

LEA : 103023153 Elizabeth Forward SD

Printed 11/28/2023 11:28:25 AM

General Fund (10)

2834 Staff Development Services – Non-Instructional, Certified Staff Only		<u>Elementary</u>	<u>Secondary</u>	<u>Federal</u>	<u>Total</u>
200	<u>Personnel Services – Employee Benefits</u>				
240	Tuition Reimbursement				1,701.00
Total Personnel Services – Employee Benefits					\$1,701.00
300	<u>Purchased Professional and Technical Services</u>				
360	Employee Training and Development Services				1,655.37
Total Purchased Professional and Technical Services					\$1,655.37
500	<u>Other Purchased Services</u>				
580	Travel				18,489.08
Total Other Purchased Services					\$18,489.08
Total 2834 Staff Development Services – Non-Instructional, Certified Staff Only					\$21,845.45

LEA : 103023153 Elizabeth Forward SD

Printed 11/28/2023 11:28:25 AM

General Fund (10)

2835 Health Services

	<u>Elementary</u>	<u>Secondary</u>	<u>Federal</u>	<u>Total</u>
300 <u>Purchased Professional and Technical Services</u>				
330 Other Professional Services				3,221.60
Total Purchased Professional and Technical Services				\$3,221.60
Total 2835 Health Services				\$3,221.60

LEA : 103023153 Elizabeth Forward SD

Printed 11/28/2023 11:28:25 AM

General Fund (10)

2836 Staff Development Services – Non-Instructional, Non-Certified Staff Only	<u>Elementary</u>	<u>Secondary</u>	<u>Federal</u>	<u>Total</u>
300 <u>Purchased Professional and Technical Services</u>				
360 Employee Training and Development Services				4,125.99
Total Purchased Professional and Technical Services				\$4,125.99
500 <u>Other Purchased Services</u>				
580 Travel				5,219.33
Total Other Purchased Services				\$5,219.33
Total 2836 Staff Development Services – Non-Instructional, Non-Certified Staff Only				\$9,345.32

LEA : 103023153 Elizabeth Forward SD

Printed 11/28/2023 11:28:25 AM

General Fund (10)				
2900 Other Support Services	<u>Elementary</u>	<u>Secondary</u>	<u>Federal</u>	<u>Total</u>
500 <u>Other Purchased Services</u>				
595 IU Payments By Withholding				23,308.72
Total Other Purchased Services				\$23,308.72
Total 2900 Other Support Services				\$23,308.72

LEA : 103023153 Elizabeth Forward SD

Printed 11/28/2023 11:28:25 AM

General Fund (10)

2910 Support Services Not Listed Elsewhere In the 2000 Series

Elementary Secondary Federal Total

500 <u>Other Purchased Services</u>				
595 IU Payments By Withholding				23,308.72
Total Other Purchased Services				\$23,308.72
Total 2910 Support Services Not Listed Elsewhere In the 2000 Series				\$23,308.72

LEA : 103023153 Elizabeth Forward SD

Printed 11/28/2023 11:28:30 AM

General Fund (10)	
3000 Operation of Non-Instructional Services	<u>Total</u>
100 <u>Personnel Services – Salaries</u>	
100 Personnel Services – Salaries	609,745.15
Total Personnel Services – Salaries	\$609,745.15
200 <u>Personnel Services – Employee Benefits</u>	
210 Group Insurance – Contracted Provider	40,257.84
220 Social Security Contributions	46,256.64
230 PSERS Retirement Contributions	207,130.39
260 Workers' Compensation	2,621.86
Total Personnel Services – Employee Benefits	\$296,266.73
300 <u>Purchased Professional and Technical Services</u>	
310 Official / Administrative Services	46,818.00
330 Other Professional Services	36,655.00
350 Security / Safety Services	22,774.20
Total Purchased Professional and Technical Services	\$106,247.20
400 <u>Purchased Property Services</u>	
410 Cleaning Services	7,676.00
430 Repairs and Maintenance Services	31,181.93
440 Rentals	14,100.00
Total Purchased Property Services	\$52,957.93
500 <u>Other Purchased Services</u>	
510 Student Transportation Services	143,195.72
580 Travel	28,778.44
Total Other Purchased Services	\$171,974.16
600 <u>Supplies</u>	
610 General Supplies	199,741.14
630 Food	15,531.25
650 Supplies & Fees – Technology Related	4,000.00
Total Supplies	\$219,272.39
700 <u>Property</u>	
752 Capital Equipment – Original and Additional	8,476.00
Total Property	\$8,476.00
800 <u>Other Objects</u>	
810 Dues and Fees	24,879.78
Total Other Objects	\$24,879.78
Total 3000 Operation of Non-Instructional Services	\$1,489,819.34

LEA : 103023153 Elizabeth Forward SD

Printed 11/28/2023 11:28:30 AM

General Fund (10)

3200 Student Activities

	<u>Elementary</u>	<u>Secondary</u>	<u>Federal</u>	<u>Total</u>
100 <u>Personnel Services – Salaries</u>				
100 Personnel Services – Salaries				609,745.15
Total Personnel Services – Salaries				\$609,745.15
200 <u>Personnel Services – Employee Benefits</u>				
210 Group Insurance – Contracted Provider				40,257.84
220 Social Security Contributions				46,256.64
230 PSERS Retirement Contributions				207,130.39
260 Workers' Compensation				2,621.86
Total Personnel Services – Employee Benefits				\$296,266.73
300 <u>Purchased Professional and Technical Services</u>				
310 Official / Administrative Services				46,818.00
330 Other Professional Services				36,655.00
350 Security / Safety Services				22,774.20
Total Purchased Professional and Technical Services				\$106,247.20
400 <u>Purchased Property Services</u>				
410 Cleaning Services				7,676.00
430 Repairs and Maintenance Services				31,181.93
440 Rentals				14,100.00
Total Purchased Property Services				\$52,957.93
500 <u>Other Purchased Services</u>				
510 Student Transportation Services				143,195.72
580 Travel				28,778.44
Total Other Purchased Services				\$171,974.16
600 <u>Supplies</u>				
610 General Supplies				198,762.93
630 Food				15,531.25
650 Supplies & Fees – Technology Related				4,000.00
Total Supplies				\$218,294.18
700 <u>Property</u>				
752 Capital Equipment – Original and Additional				8,476.00
Total Property				\$8,476.00
800 <u>Other Objects</u>				
810 Dues and Fees				24,879.78
Total Other Objects				\$24,879.78
Total 3200 Student Activities				\$1,488,841.13

LEA : 103023153 Elizabeth Forward SD

Printed 11/28/2023 11:28:30 AM

General Fund (10)				
3300 Community Services	<u>Elementary</u>	<u>Secondary</u>	<u>Federal</u>	<u>Total</u>
600 <u>Supplies</u>				
610 General Supplies			978.21	978.21
Total Supplies			\$978.21	\$978.21
Total 3300 Community Services			\$978.21	\$978.21

General Fund (10)

4000 Facilities Acquisition, Construction and Improvement Services

Total

400 <u>Purchased Property Services</u>	
450 Construction Services	2,214,803.21
Total Purchased Property Services	\$2,214,803.21
700 <u>Property</u>	
752 Capital Equipment – Original and Additional	5,740.60
762 Capitalized Equipment - Replacement	160,697.20
Total Property	\$166,437.80
Total 4000 Facilities Acquisition, Construction and Improvement Services	\$2,381,241.01

LEA : 103023153 Elizabeth Forward SD

Printed 11/28/2023 11:28:33 AM

General Fund (10)

4500 Building Acquisition and Construction Services – Original and Additional	<u>Elementary</u>	<u>Secondary</u>	<u>Federal</u>	<u>Total</u>
400 <u>Purchased Property Services</u>				
450 Construction Services				31,266.72
Total Purchased Property Services				\$31,266.72
700 <u>Property</u>				
752 Capital Equipment – Original and Additional				5,740.60
Total Property				\$5,740.60
Total 4500 Building Acquisition and Construction Services – Original and Additional				\$37,007.32

LEA : 103023153 Elizabeth Forward SD

Printed 11/28/2023 11:28:33 AM

General Fund (10)				
4600 Existing Building Improvement Services	<u>Elementary</u>	<u>Secondary</u>	<u>Federal</u>	<u>Total</u>
400 <u>Purchased Property Services</u>				
450 Construction Services				2,183,536.49
Total Purchased Property Services				\$2,183,536.49
700 <u>Property</u>				
762 Capitalized Equipment - Replacement				160,697.20
Total Property				\$160,697.20
Total 4600 Existing Building Improvement Services				\$2,344,233.69

LEA : 103023153 Elizabeth Forward SD

Printed 11/28/2023 11:28:37 AM

General Fund (10)	
5000 Other Expenditures and Financing Uses	<u>Total</u>
800 <u>Other Objects</u>	
880 Refunds of Prior Years' Receipts	59,472.55
Total Other Objects	\$59,472.55
900 <u>Other Uses of Funds</u>	
932 Capital Reserve Fund Transfers Applicable To Fund 32	784,040.00
939 Other Fund Transfers	3,158,727.50
Total Other Uses of Funds	\$3,942,767.50
Total 5000 Other Expenditures and Financing Uses	\$4,002,240.05

LEA : 103023153 Elizabeth Forward SD

Printed 11/28/2023 11:28:37 AM

General Fund (10)

5100 Debt Service / Other Expenditures and Financing Uses	<u>Elementary</u>	<u>Secondary</u>	<u>Federal</u>	<u>Total</u>
800 <u>Other Objects</u>				
880 Refunds of Prior Years' Receipts				59,472.55
Total Other Objects				\$59,472.55
Total 5100 Debt Service / Other Expenditures and Financing Uses				\$59,472.55

LEA : 103023153 Elizabeth Forward SD

Printed 11/28/2023 11:28:37 AM

General Fund (10)

5130 Refund of Prior Year Revenues / Receipts	<u>Elementary</u>	<u>Secondary</u>	<u>Federal</u>	<u>Total</u>
800 <u>Other Objects</u>				
880 Refunds of Prior Years' Receipts				59,472.55
Total Other Objects				\$59,472.55
Total 5130 Refund of Prior Year Revenues / Receipts				\$59,472.55

LEA : 103023153 Elizabeth Forward SD

Printed 11/28/2023 11:28:37 AM

General Fund (10)

5200 Interfund Transfers – Out

Elementary Secondary Federal Total

900 Other Uses of Funds

932 Capital Reserve Fund Transfers Applicable To Fund 32 784,040.00

939 Other Fund Transfers 3,158,727.50

Total Other Uses of Funds				\$3,942,767.50
Total 5200 Interfund Transfers – Out				\$3,942,767.50

LEA : 103023153 Elizabeth Forward SD

Printed 11/28/2023 11:28:37 AM

General Fund (10)

5230 Capital Projects Fund Transfers	<u>Elementary</u>	<u>Secondary</u>	<u>Federal</u>	<u>Total</u>
900 <u>Other Uses of Funds</u>				
932 Capital Reserve Fund Transfers Applicable To Fund 32				784,040.00
Total Other Uses of Funds				\$784,040.00
Total 5230 Capital Projects Fund Transfers				\$784,040.00

LEA : 103023153 Elizabeth Forward SD

Printed 11/28/2023 11:28:37 AM

General Fund (10)

5240 Debt Service Fund Transfers	<u>Elementary</u>	<u>Secondary</u>	<u>Federal</u>	<u>Total</u>
900 <u>Other Uses of Funds</u>				
939 Other Fund Transfers				3,158,727.50
Total Other Uses of Funds				\$3,158,727.50
Total 5240 Debt Service Fund Transfers				\$3,158,727.50

LEA : 103023153 Elizabeth Forward SD

Printed 11/28/2023 11:28:35 AM

Capital Reserve Fund - § 1431 (32)

4000 Facilities Acquisition, Construction and Improvement Services

Total

400 Purchased Property Services

450 Construction Services

51,172.50

Total Purchased Property Services

\$51,172.50

Total 4000 Facilities Acquisition, Construction and Improvement Services

\$51,172.50

LEA : 103023153 Elizabeth Forward SD

Printed 11/28/2023 11:28:35 AM

Capital Reserve Fund - § 1431 (32)				
4600 Existing Building Improvement Services	<u>Elementary</u>	<u>Secondary</u>	<u>Federal</u>	<u>Total</u>
400 <u>Purchased Property Services</u>				
450 Construction Services				51,172.50
Total Purchased Property Services				\$51,172.50
Total 4600 Existing Building Improvement Services				\$51,172.50

LEA : 103023153 Elizabeth Forward SD

Printed 11/28/2023 11:28:40 AM

Debt Service Fund (40)

5000 Other Expenditures and Financing Uses

Total

800 <u>Other Objects</u>	
830 Interest	2,173,712.21
Total Other Objects	\$2,173,712.21
900 <u>Other Uses of Funds</u>	
910 Redemption of Principal	985,015.29
Total Other Uses of Funds	\$985,015.29
Total 5000 Other Expenditures and Financing Uses	\$3,158,727.50

LEA : 103023153 Elizabeth Forward SD

Printed 11/28/2023 11:28:40 AM

Debt Service Fund (40)

5100 Debt Service / Other Expenditures and Financing Uses	<u>Elementary</u>	<u>Secondary</u>	<u>Federal</u>	<u>Total</u>
800 <u>Other Objects</u>				
830 Interest				2,173,712.21
Total Other Objects				\$2,173,712.21
900 <u>Other Uses of Funds</u>				
910 Redemption of Principal				985,015.29
Total Other Uses of Funds				\$985,015.29
Total 5100 Debt Service / Other Expenditures and Financing Uses				\$3,158,727.50

LEA : 103023153 Elizabeth Forward SD

Printed 11/28/2023 11:28:40 AM

Debt Service Fund (40)

5110 Debt Service	<u>Elementary</u>	<u>Secondary</u>	<u>Federal</u>	<u>Total</u>
800 <u>Other Objects</u>				
830 Interest				2,173,712.21
Total Other Objects				\$2,173,712.21
900 <u>Other Uses of Funds</u>				
910 Redemption of Principal				985,015.29
Total Other Uses of Funds				\$985,015.29
Total 5110 Debt Service				\$3,158,727.50

LEA : 103023153 Elizabeth Forward SD

Printed 11/28/2023 11:28:43 AM

	General Fund(10)	Student Sponsored Activity Fund(21)	Public Purpose Trust(27)	Other Compt Approved (28)	Athletic / Activity(29)
1000 Instruction					
1100 Regular Programs - Elementary / Secondary	20,166,155.26				
1200 Special Programs - Elementary / Secondary	6,081,302.12				
1300 Vocational Education	1,953,411.52				
1400 Other Instructional Programs - Elementary / Secondary	202,160.28				
1500 Nonpublic School Programs	4,367.00				
Total Instruction	\$28,407,396.18				
2000 Support Services					
2100 Support Services - Students	1,341,697.33				
2200 Support Services - Instructional Staff	1,995,926.44				
2300 Support Services - Administration	2,944,272.68				
2400 Support Services - Pupil Health	581,480.49				
2500 Support Services - Business	616,629.33				
2600 Operation and Maintenance of Plant Services	4,937,830.80				
2700 Student Transportation Services	2,795,156.38				
2800 Support Services - Central	386,374.69				
2900 Other Support Services	23,308.72				
Total Support Services	\$15,622,676.86				
3000 Operation of Non-Instructional Services					
3200 Student Activities	1,488,841.13				
3300 Community Services	978.21				
Total Operation of Non-Instructional Services	\$1,489,819.34				
4000 Facilities Acquisition, Construction and Improvement Services					
4500 Building Acquisition and Construction Services - Original and Additional	37,007.32				
4600 Existing Building Improvement Services	2,344,233.69				
Total Facilities Acquisition, Construction and Improvement Services	\$2,381,241.01				
5000 Other Expenditures and Financing Uses					
5100 Debt Service / Other Expenditures and Financing Uses	59,472.55				
5200 Interfund Transfers - Out	3,942,767.50				
Total Other Expenditures and Financing Uses	\$4,002,240.05				
TOTAL ACTUAL EXPENDITURES & OTHER FINANCING USES	\$51,903,373.44				

LEA : 103023153 Elizabeth Forward SD

Printed 11/28/2023 11:28:43 AM

	<u>Capital Reserve (690.1850)(31)</u>	<u>Capital Reserve (1431)(32)</u>	<u>Other Capital Projects Fund(39)</u>	<u>Debt Service(40)</u>	<u>Permanent(90)</u>
1000 <u>Instruction</u>					
1100 Regular Programs - Elementary / Secondary					
1200 Special Programs - Elementary / Secondary					
1300 Vocational Education					
1400 Other Instructional Programs - Elementary / Secondary					
1500 Nonpublic School Programs					
Total Instruction					
2000 <u>Support Services</u>					
2100 Support Services - Students					
2200 Support Services - Instructional Staff					
2300 Support Services - Administration					
2400 Support Services - Pupil Health					
2500 Support Services - Business					
2600 Operation and Maintenance of Plant Services					
2700 Student Transportation Services					
2800 Support Services - Central					
2900 Other Support Services					
Total Support Services					
3000 <u>Operation of Non-Instructional Services</u>					
3200 Student Activities					
3300 Community Services					
Total Operation of Non-Instructional Services					
4000 <u>Facilities Acquisition, Construction and Improvement Services</u>					
4500 Building Acquisition and Construction Services - Original and Additional					
4600 Existing Building Improvement Services		51,172.50			
Total Facilities Acquisition, Construction and Improvement Services		\$51,172.50			
5000 <u>Other Expenditures and Financing Uses</u>					
5100 Debt Service / Other Expenditures and Financing Uses				3,158,727.50	
5200 Interfund Transfers - Out					
Total Other Expenditures and Financing Uses				\$3,158,727.50	
TOTAL ACTUAL EXPENDITURES & OTHER FINANCING USES		\$51,172.50		\$3,158,727.50	

LEA : 103023153 Elizabeth Forward SD

Printed 11/28/2023 11:28:43 AM

	<u>Total</u>
1000 <u>Instruction</u>	
1100 Regular Programs - Elementary / Secondary	20,166,155.26
1200 Special Programs - Elementary / Secondary	6,081,302.12
1300 Vocational Education	1,953,411.52
1400 Other Instructional Programs - Elementary / Secondary	202,160.28
1500 Nonpublic School Programs	4,367.00
Total Instruction	\$28,407,396.18
2000 <u>Support Services</u>	
2100 Support Services - Students	1,341,697.33
2200 Support Services - Instructional Staff	1,995,926.44
2300 Support Services - Administration	2,944,272.68
2400 Support Services - Pupil Health	581,480.49
2500 Support Services - Business	616,629.33
2600 Operation and Maintenance of Plant Services	4,937,830.80
2700 Student Transportation Services	2,795,156.38
2800 Support Services - Central	386,374.69
2900 Other Support Services	23,308.72
Total Support Services	\$15,622,676.86
3000 <u>Operation of Non-Instructional Services</u>	
3200 Student Activities	1,488,841.13
3300 Community Services	978.21
Total Operation of Non-Instructional Services	\$1,489,819.34
4000 <u>Facilities Acquisition, Construction and Improvement Services</u>	
4500 Building Acquisition and Construction Services - Original and Additional	37,007.32
4600 Existing Building Improvement Services	2,395,406.19
Total Facilities Acquisition, Construction and Improvement Services	\$2,432,413.51
5000 <u>Other Expenditures and Financing Uses</u>	
5100 Debt Service / Other Expenditures and Financing Uses	3,218,200.05
5200 Interfund Transfers - Out	3,942,767.50
Total Other Expenditures and Financing Uses	\$7,160,967.55
TOTAL ACTUAL EXPENDITURES & OTHER FINANCING USES	\$55,113,273.44

LEA : 103023153 Elizabeth Forward SD

Printed 11/28/2023 11:28:54 AM

PSERS Salary Data (Salary Data should relate to the General Fund only)

Amount	Description	Amount
	Total Salary Base for salaries subject to PSERS withholding	20,021,956.86
	Total Federally Funded salaries subject to PSERS withholding	694,560.80

Title I Expenditure Data

Amount	Description	Amount
	Expenditures Funded with Current Title I Funds	343,554.00
	Expenditures Funded with Carry over Title I Funds	
Total	Title I Expenditure Data	\$343,554.00

Title IV Revenue Data

Amount	Description	Amount
	Revenue from Title IV-A-1: Student Support and Academic Enrichment Grants	23,012.00
	Revenue from Title IV-B: 21st Century Community Learning Centers	

Title V Revenue Data

Amount	Description	Amount
	Revenue from Title V-B-2: Rural and Low-Income School Programs	
	Revenue from Title V-B-1: Small Rural School Achievement (Directly from the Federal Govt)	

1 .	<u>Current Special Education Expenditures within Function 1000</u> See list of exclusions in the note below.	4,828,259.26
2 .	<u>Current Special Education Expenditures within Function 2000</u> See list of exclusions in the note below.	1,032,264.69
2A.	<u>Current Special Education Expenditures within Sub-Function 2100</u> This data should also be included in line 2 above. See list of exclusions in the note below.	350,994.15
2B.	<u>Current Special Education Expenditures within Sub-Function 2200</u> This data should also be included in line 2 above. See list of exclusions in the note below.	253,351.71
2C.	<u>Current Special Education Expenditures within Sub-Function 2700</u> This data should also be included in line 2 above. See list of exclusions in the note below.	427,918.83
3.	<u>Current Special Education Expenditures within Sub-Function 3100</u> See list of exclusions in the note below.	
4.	<u>Current Special Education Expenditures within Sub-Function 3200</u> See list of exclusions in the note below.	

Note: The Current Special Education Expenditure amounts for each line should be calculated as follows:

- * Include the total expenditures for special education costs from all governmental funds and the food service fund 51 for the function/sub-function requested
- * Exclude data from sub-functions: 1243,1450,1500,1600,1807,2280,2450,2750,2990
- * Exclude data from objects: 322,511,512,516,561,562,564,566,592,593,594,595,596,597,700,830,899

Benefits for Staff Relative to Collective Bargaining Agreements

	OBJECT	COVERED	NOT COVERED	TOTAL
10 General Fund	No Self Insurance data to report			
	211 Medical Insurance	3,441,106.00	367,112.00	3,808,218.00
	212 Dental Insurance	191,330.00	21,732.00	213,062.00
	215 Eye Care Insurance		3,010.00	3,010.00
	216 Prescription Insurance			
	271 Self-Insurance Medical Benefits			
	272 Self-Insurance Dental Benefits			
	275 Self-Insurance Eye Care Benefits			
	276 Self-Insurance Prescription Benefits			
	FUND TOTAL	\$3,632,436.00	\$391,854.00	\$4,024,290.00
50 Enterprise Fund	No Self Insurance data to report			
	211 Medical Insurance			
	212 Dental Insurance			
	215 Eye Care Insurance			
	216 Prescription Insurance			
	271 Self-Insurance Medical Benefits			
	272 Self-Insurance Dental Benefits			
	275 Self-Insurance Eye Care Benefits			
	276 Self-Insurance Prescription Benefits			
	FUND TOTAL			
60 Internal Service Fund	No Self Insurance data to report			
	211 Medical Insurance			
	212 Dental Insurance			
	215 Eye Care Insurance			
	216 Prescription Insurance			
	271 Self-Insurance Medical Benefits			
	272 Self-Insurance Dental Benefits			
	275 Self-Insurance Eye Care Benefits			
	276 Self-Insurance Prescription Benefits			
	FUND TOTAL			
Total of All Funds		\$3,632,436.00	\$391,854.00	\$4,024,290.00

LEA : 103023153 Elizabeth Forward SD

Printed 11/28/2023 11:28:59 AM

Function	Special Education (Prior Year)	Nonspecial Education (Prior Year)	Total (Prior Year)	Special Education (Current Year)	Nonspecial Education (Current Year)	Total (Current Year)
2120 Guidance Services	151,780.06	640,805.11	792,585.17	153,921.51	630,192.12	784,113.63
2140 Psychological Services	70,160.28	296,211.94	366,372.22	71,844.65	294,149.50	365,994.15
2150 Speech Pathology and Audiology Services						
2160 Social Work Services	10,139.93	42,810.07	52,950.00	12,569.74	51,463.60	64,033.34
2260 Instruction and Curriculum Development Services	118,632.59	500,858.76	619,491.35	135,524.03	554,868.36	690,392.39
2350 Legal and Accounting Services	23,486.66	99,159.11	122,645.77	14,762.53	60,441.37	75,203.90
2420 Medical Services	2,192.43	9,256.27	11,448.70	2,332.00	9,547.79	11,879.79
2440 Nursing Services	97,259.77	410,624.16	507,883.93	111,335.85	455,836.10	567,171.95
2700 Student Transportation Services	497,013.03	2,098,355.27	2,595,368.30	518,347.38	2,122,041.79	2,640,389.17
Total	\$970,664.75	\$4,098,080.69	\$5,068,745.44	\$1,020,637.69	\$4,178,540.63	\$5,199,178.32

LEA : 103023153 Elizabeth Forward SD

	(PRINCIPAL AMOUNTS ONLY)							
<u>GOVERNMENTAL FUNDS/ ACTIVITIES</u>	Short-Term Borrowing	General Obligation Bonds/Notes	Authority Building Obligations	Leases, Other Right to Use Arrangements	Extended Term Financing Agreements	Other Long Term Debt/Liabilities	OPEB, Comp Abs, Net Pension Liab	Total
1. Debt at Beginning of Fiscal Year		22,654,265.85					61,228,688.00	83,882,953.85
2. Additional Debt Incurred During Year						2,410,304.00	3,315,437.00	5,725,741.00
3. Retirements and Repayments		985,015.29					1,503,843.00	2,488,858.29
4. Debt at End of Fiscal Year		21,669,250.56				2,410,304.00	63,040,282.00	87,119,836.56
5. Accreted Interest at End Of Fiscal Year		11,030,749.08						11,030,749.08
6. Total Debt and Accreted Interest		32,699,999.64				2,410,304.00	63,040,282.00	98,150,585.64
7. Current Portion P&I - Due within 1 year		3,160,752.50				187,122.00		3,347,874.50
8. Interest Paid during current fiscal year		2,173,712.21				57,225.22		2,230,937.43

(PRINCIPAL AMOUNTS ONLY)							
<u>PROPRIETARY FUNDS</u>							
1. Debt at Beginning of Fiscal Year							
2. Additional Debt Incurred During Year							
3. Retirements and Repayments							
4. Debt at End of Fiscal Year							
5. Accreted Interest at End Of Fiscal Year							
6. Total Debt and Accreted Interest							
7. Current Portion P&I - Due within 1 year							
8. Interest Paid during current fiscal year							

LEA : 103023153 Elizabeth Forward SD

Total Principal and Interest Payments Made by Your School - All Funds

Function	Fund		Principal (910)	Principal (920)	Interest (830)	Total (Principal +Interest)	Misc Other Uses (990)
5110	10	General Fund					
5110	20	Special Revenue Funds					
5110	30	Capital Projects Funds					
5110	40	Debt Service Fund	985,015.29		2,173,712.21	3,158,727.50	
5110	90	Permanent Fund					
5120	10	General Fund					
5120	20	Special Revenue Funds					
5120	30	Capital Projects Funds					
5120	40	Debt Service Fund					
5140	10	General Fund					
5140	20	Special Revenue Funds					
5140	30	Capital Projects Funds					
5140	40	Debt Service Fund					
5140	90	Permanent Fund					
Total Debt Payments - Governmental Funds			\$985,015.29		\$2,173,712.21	\$3,158,727.50	

Function	Fund		Principal (910)	Principal (920)	Interest (830)	Total (Principal +Interest)
5110	50	Enterprise Fund				
5110	60	Internal Service Fund				
5120	50	Enterprise Fund				
5120	60	Internal Service Fund				
5140	50	Enterprise Fund				
5140	60	Internal Service Fund				
Total Debt Payments - Proprietary Funds						

LEA : 103023153 Elizabeth Forward SD

Debt Details
Governmental Funds/ Activities

Debt Category	Debt Issue Date (MM/YYYY)	Principal Amounts Only				Current Portion Due Within One Year (Principal and Interest)	Interest Paid During Fiscal Year
		Debt at Beginning of Fiscal Year	Additions	Reductions / Repayments	Debt at End of Fiscal Year		
General Obligation Bonds/Notes – CIB	08/2021	7,510,000.00		425,000.00	7,085,000.00	577,300.00	145,950.00
General Obligation Bonds/Notes – CIB	09/2021	2,600,000.00		20,000.00	2,580,000.00	68,775.00	49,175.00
General Obligation Bonds/Notes – CIB	09/2021	1,795,000.00		15,000.00	1,780,000.00	44,975.00	35,225.00
General Obligation Bonds/Notes – CIB	07/2020	4,915,000.00		65,000.00	4,850,000.00	179,877.50	111,902.50
General Obligation Bonds/Notes – CIB	07/2020	3,010,000.00		55,000.00	2,955,000.00	114,825.00	61,475.00
General Obligation Bonds/Notes – CAB	09/1999	1,327,207.95		1,330.19	1,325,877.76	5,000.00	3,669.81
General Obligation Bonds/Notes – CAB	07/1995	1,497,057.90		403,685.10	1,093,372.80	2,170,000.00	1,766,314.90
Other Long Term Debt/Liabilities			2,410,304.00		2,410,304.00	187,122.00	57,225.22
Compensated Absences		942,498.00	4,437.00		946,935.00		
Other Post-Employment Benefits (OPEB)		6,379,190.00		1,503,843.00	4,875,347.00		
Net Pension Liability		53,907,000.00	3,311,000.00		57,218,000.00		
Totals for Debt Entered:		\$83,882,953.85	\$5,725,741.00	\$2,488,858.29	\$87,119,836.56	\$3,347,874.50	\$2,230,937.43

LEA : 103023153 Elizabeth Forward SD

Printed 11/28/2023 11:29:02 AM

Accreted Interest Detail
Governmental Funds/ Activities

Debt Category	Debt Issue Date (MM/YYYY)	Beginning Accreted Interest	Additions	Reductions	Ending Accreted Interest	Ending bond Principal	Ending Principal Plus Accreted Interest
General Obligation Bonds/Notes – CAB	09/1999	5,612,792.09		3,669.81	5,609,122.28	1,325,877.76	6,935,000.04
General Obligation Bonds/Notes – CAB	07/1995	7,187,941.70		1,766,314.90	5,421,626.80	1,093,372.80	6,514,999.60
Totals for Debt Entered:		\$12,800,733.79		\$1,769,984.71	\$11,030,749.08	\$2,419,250.56	\$13,449,999.64

LEA : 103023153 Elizabeth Forward SD

General Fund (10)

Section 1: Tuition/Purchased Services as Reported within Expenditure Detail	Amount
Tuition Reported in General Fund Expenditures 1000-560	2,108,820.34
Purchased Services in General Fund Expenditures 1000-594 and 1000-597	1,696.20
Section 1 Total	\$2,110,516.54

Section 2: Tuition Paid to Institution Types During Fiscal Year	Tuition Paid For Nonspecial Education	Tuition Paid For Special Education	Total
1 1306 Institutions			
2 Institutionalized Children's Programs			
3 Juveniles Incarcerated in Adult Facilities			
4 Residential Treatment Facilities			
5 Other Local Education Agencies	57,018.59	13,900.06	70,918.65
6 Brick and Mortar Charter Schools	54,937.92		54,937.92
7 Cyber Charter Schools	579,898.14	490,613.29	1,070,511.43
8 Career and Technology Centers	554,890.67	135,271.86	690,162.53
9 Approved Private Schools	152,542.77	37,187.04	189,729.81
10 PA Chartered Schools for the Deaf and Blind			
11 Private Residential Rehabilitative Institutions			
12 Juvenile Detention Centers			
13 Special Program Jointures			
14 Other Tuition Not Included Elsewhere In This Section	26,178.24	8,077.96	34,256.20
Section 2 Total	\$1,425,466.33	\$685,050.21	\$2,110,516.54

LEA : 103023153 Elizabeth Forward SD

Printed 11/28/2023 11:29:08 AM

Food Service / Cafeteria Operations Fund (51)

3000 Operation of Non-Instructional Services		<u>Total</u>
500 <u>Other Purchased Services</u>		
570 Food Service Management		949,160.97
Total Other Purchased Services		\$949,160.97
600 <u>Supplies</u>		
610 General Supplies		62,360.26
630 Food		70,660.47
650 Supplies & Fees – Technology Related		6,560.00
Total Supplies		\$139,580.73
700 <u>Property</u>		
740 Depreciation		12,867.88
Total Property		\$12,867.88
800 <u>Other Objects</u>		
810 Dues and Fees		999.00
Total Other Objects		\$999.00
900 <u>Other Uses of Funds</u>		
900 Other Uses of Funds		2,829.47
Total Other Uses of Funds		\$2,829.47
Total 3000 Operation of Non-Instructional Services		\$1,105,438.05

LEA : 103023153 Elizabeth Forward SD

Printed 11/28/2023 11:29:08 AM

Food Service / Cafeteria Operations Fund (51)

3100 Food Services	<u>Elementary</u>	<u>Secondary</u>	<u>Federal</u>	<u>Total</u>
500 <u>Other Purchased Services</u>				
570 Food Service Management				949,160.97
Total Other Purchased Services				\$949,160.97
600 <u>Supplies</u>				
610 General Supplies				62,360.26
630 Food				70,660.47
650 Supplies & Fees – Technology Related				6,560.00
Total Supplies				\$139,580.73
700 <u>Property</u>				
740 Depreciation				12,867.88
Total Property				\$12,867.88
800 <u>Other Objects</u>				
810 Dues and Fees				999.00
Total Other Objects				\$999.00
900 <u>Other Uses of Funds</u>				
900 Other Uses of Funds				2,829.47
Total Other Uses of Funds				\$2,829.47
Total 3100 Food Services				\$1,105,438.05

	<u>Food Service(51)</u>	<u>Child Care Operations(52)</u>	<u>Other Enterprise(58)</u>	<u>Internal Service(60)</u>	<u>Total</u>
3000 <u>Operation of Non-Instructional Services</u>					
3100 Food Services	1,105,438.05				1,105,438.05
Total Operation of Non-Instructional Services	\$1,105,438.05				\$1,105,438.05
TOTAL ACTUAL EXPENDITURES & OTHER FINANCING USES	\$1,105,438.05				\$1,105,438.05

LEA : 103023153 Elizabeth Forward SD

Printed 11/28/2023 11:29:17 AM

Fund	School	School Number	Local Personnel	Local Nonpersonnel	State Personnel	State Nonpersonnel	Federal Personnel	Federal Nonpersonnel	Total	Explanation
10										
	Central El Sch	136	2,047,399.00	435,519.00	1,853,629.00	394,301.00	214,163.00	254,221.00	5,199,232.00	
	Elizabeth Forward MS	4804	3,907,424.00	837,283.00	3,537,616.00	758,041.00	240,503.00	493,224.00	9,774,091.00	
	Elizabeth Forward SHS	144	5,406,503.00	2,975,855.00	4,894,818.00	2,694,213.00	41,757.00	614,068.00	16,627,214.00	
	Greenock El Sch	8115	1,341,865.00	312,151.00	1,214,867.00	282,608.00	182,825.00	177,238.00	3,511,554.00	
	Mt Vernon El Sch	142	1,455,687.00	285,361.00	1,317,918.00	258,354.00	26,908.00	178,133.00	3,522,361.00	
	William Penn El Sch	139	2,322,968.00	481,442.00	2,103,117.00	435,877.00	425,678.00	303,453.00	6,072,535.00	
Total			16,481,846.00	5,327,611.00	14,921,965.00	4,823,394.00	1,131,834.00	2,020,337.00	44,706,987.00	